

WE WILL BEGIN SHORTLY



TOWN HALL
PRESENTATION
29 OCTOBER 2020

SLEEPY HOLLOW
COMMUNITY CENTER
RENOVATION

AGENDA

PROJECT HISTORY & COMMUNITY GOALS

DESIGN CONSIDERATIONS

A TOUR OF THE FULLY-REALIZED
COMMUNITY CENTER SITE

WHERE WE ARE IN THE PROCESS NOW

NEXT STEPS



PROJECT HISTORY & COMMUNITY GOALS

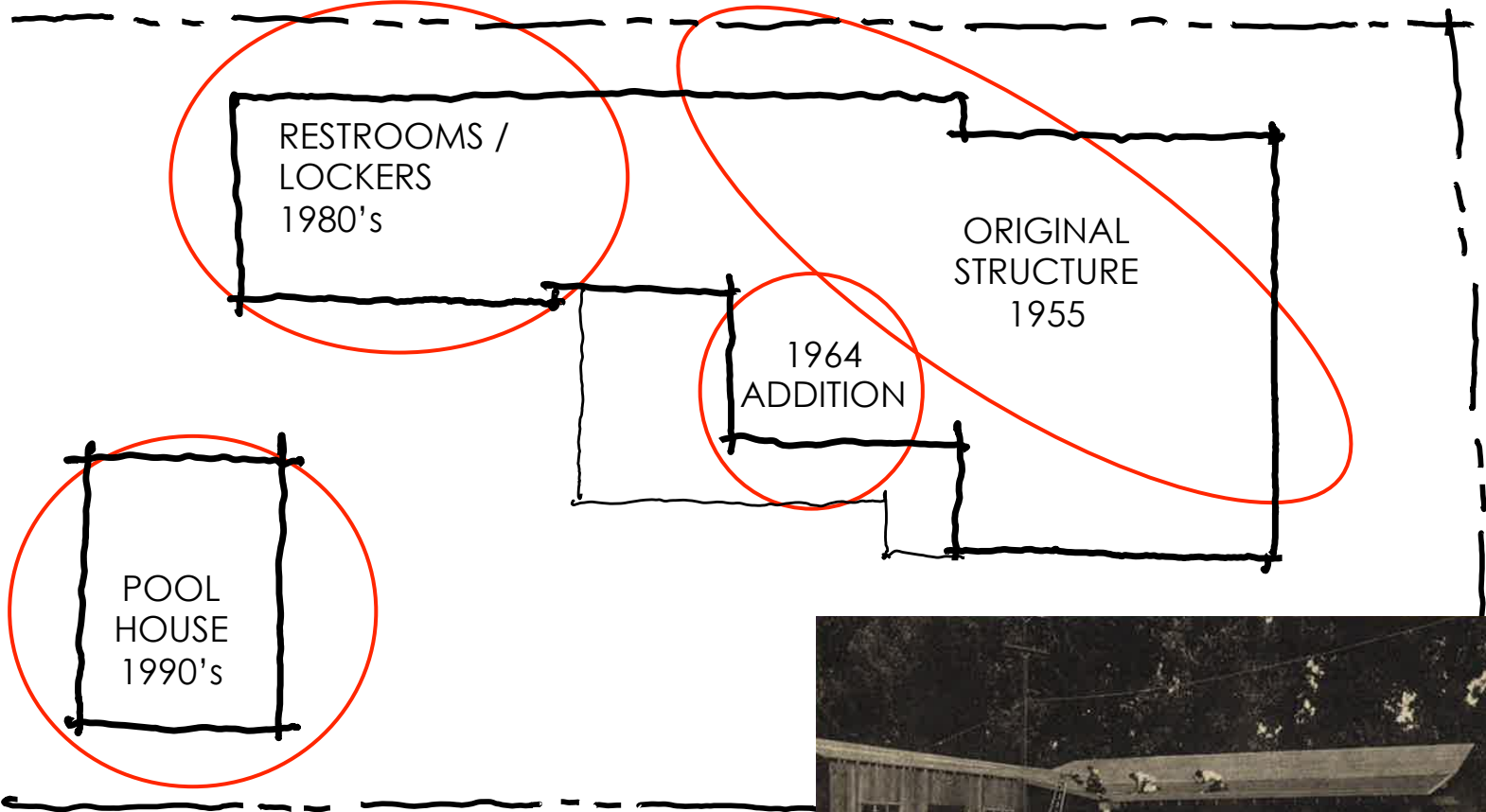
COMMUNITY GOALS

- Provide adaptable spaces for the community **for a variety of uses and ages**
- Provide **lease space** for the Sleepy Hollow Fire Protection District - office and meeting
- Provide accommodation for **back-up power and emergency (C.E.R.T.) storage**
- **Be an asset** to home values in Sleepy Hollow and a benefit to residents now and future.



COMMUNITY GOALS

- **Build to a scale and cost to operate** that allows ample support for site and activity management
- Build to as high a standard of **energy efficiency** and **safety** as feasible
- **Incorporate technologies** to enable cost effective energy management, building and site management
- **Renew** and extend the useful life of the buildings



KEEP THE PIECES THAT WORK AND
HAVE VALUE



DESIGN CONSIDERATIONS

DESIGN CONSIDERATIONS



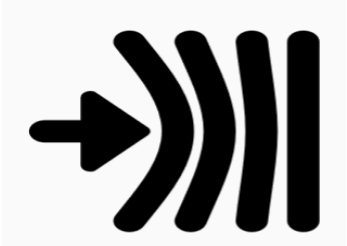
Building Renewal



Safety/Circulation



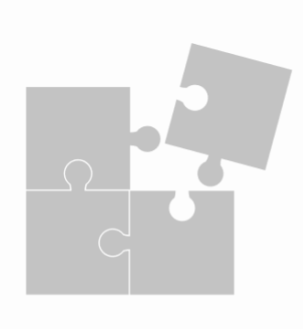
Wellness/Sustainability



Resiliency



Demonstration



Adaptability

Take a Deeper Dive into these Design Considerations at SHHA.org

DESIGN CONSIDERATIONS – BUILDING RENEWAL



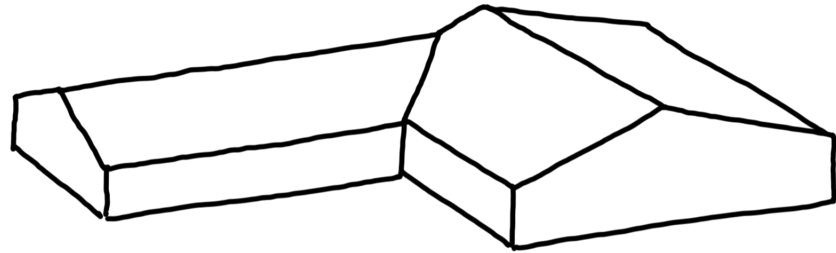
Accentuate the Happy Merger of Two Sleepy Hollow House Styles



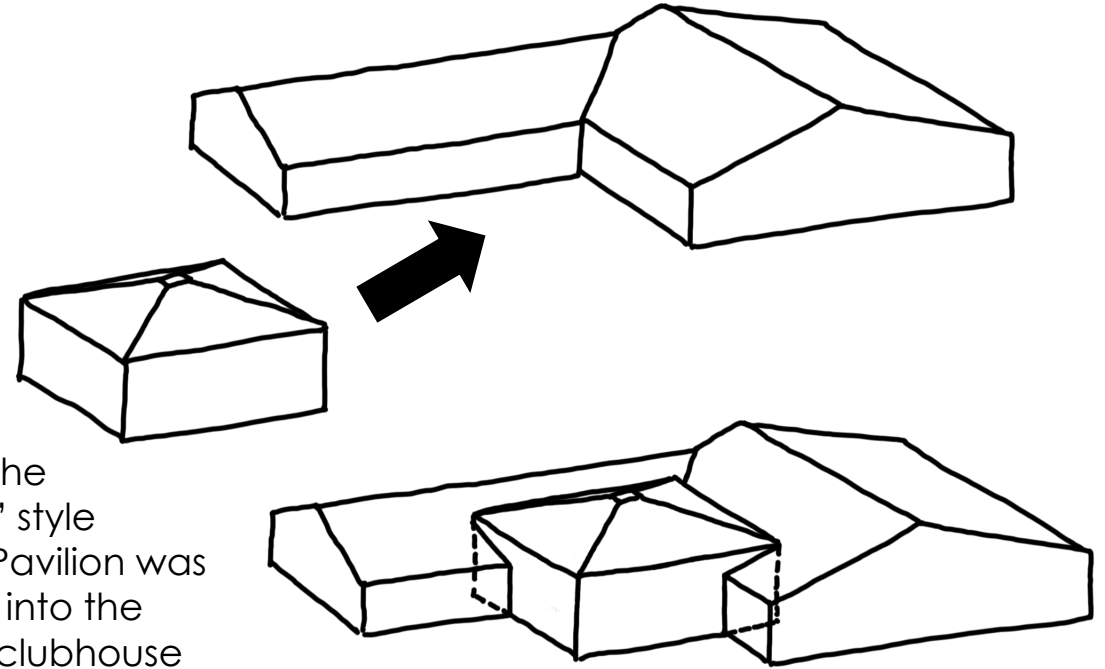
The California Ranch House



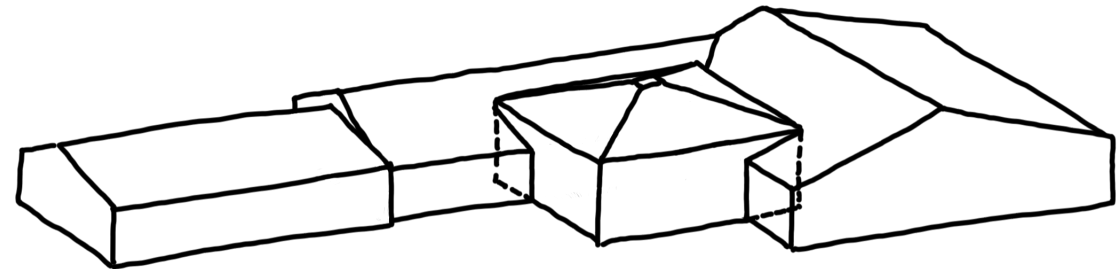
Eichler Homes



In the 1950's the founders of the Home Association gathered together to build an "L" shaped "California Ranch"-style clubhouse

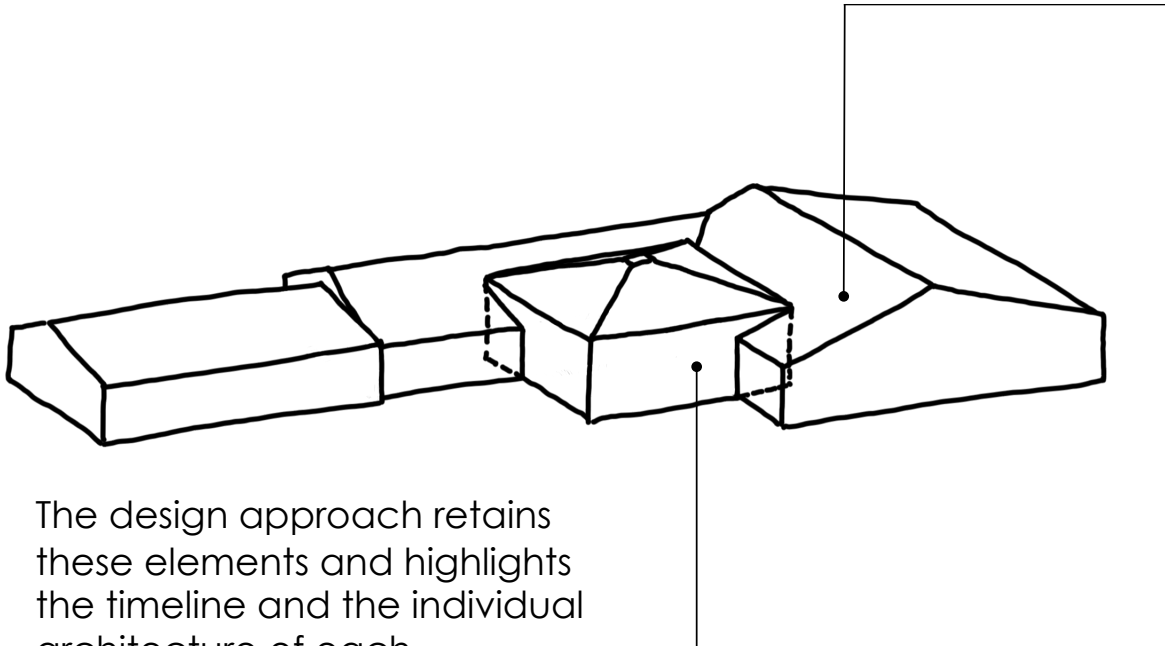


In 1964 the "Eichler" style Dance Pavilion was inserted into the original clubhouse



The restroom/locker room portion was added as another element in the 1980's - in keeping with the original "Ranch House" aesthetic

DESIGN CONSIDERATIONS – BUILDING RENEWAL



The design approach retains these elements and highlights the timeline and the individual architecture of each.



The “Founders”

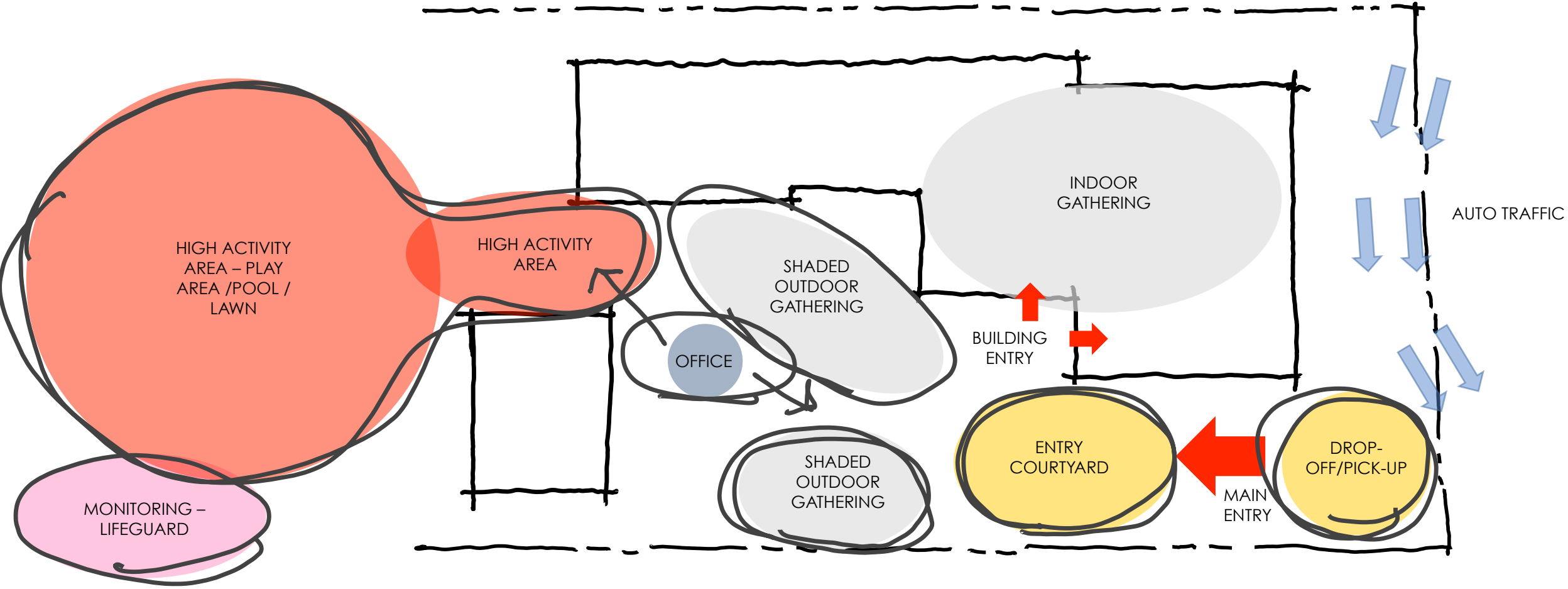


The “Legends”

DESIGN FACTORS – SAFETY / CIRCULATION

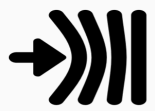


New Site Plan



IMPROVED ENTRY SAFETY AND ACTIVITY FLOW

DESIGN FACTORS - RESILIENCY



Rally Point / Source of Information

Emergency Power

Robust Communications

Charging Stations

Emergency Supplies (C.E.R.T. – medical)

State of the Art Audio Visual

Emergency Shelter (Beds, Water, Food)

SHFPD Office Weekend Staffing





- Bio-Diverse Fire Smart Landscape
- Fire Resistant Building Hardening
- Defensible Space
- Climate Resistance
- Water Conservation
- Storyboard / Labels



A TOUR OF THE FULLY-REALIZED COMMUNITY CENTER SITE

THE EXISTING COMMUNITY CENTER



THE RENEWED COMMUNITY CENTER



© Fairchild Broms Design Artist Conception - details subject to change in final construction

SITE MASTER PLAN



ENTRY & DROP OFF

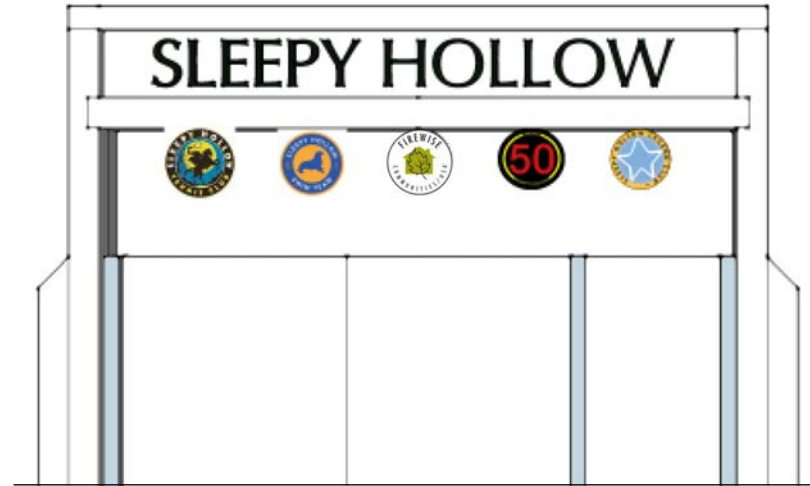
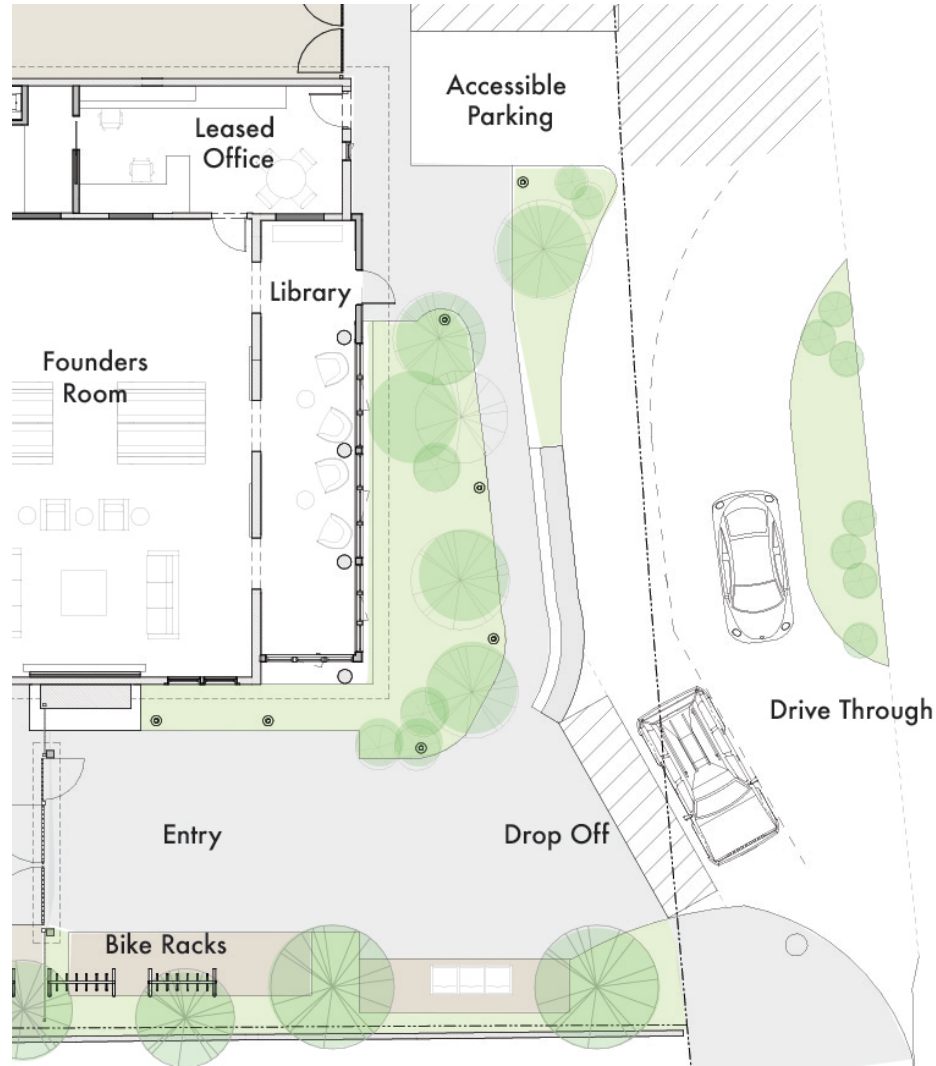


Community message Board and library



The entry is designed to provide a safe drop off and clear entry point to the site. This also provides a place for community information with a community message board and direct access to the Fire Board leased office.

ENTRY & DROP OFF



Entry portal with community organizations & recognition. Portal design is continuing to be developed in parallel with the new community logo development now underway.



The entry portal will highlight all the active organizations affiliated with Sleepy Hollow and will provide flexibility for additions in the future.

COURTYARDS

The Community Courtyard links the Entry Court and the existing Donor Circle to provide space for the community to gather, celebrate and rally in an emergency. The office and C.E.R.T. Storage will have direct access off this space. The Dining arbor will be a covered space for outdoor community gatherings with a connection to the Legends Room and kitchen.



VIEW FROM ENTRY GATE



© Fairchild Broms Design Artist Conception - details subject to change in final construction

VIEW FROM THE COMMUNITY COURTYARD



© Fairchild Broms Design Artist Conception - details subject to change in final construction

LEGENDS ROOM



The Legends Room will provide direct access to the Community Courtyard with two 12' wide folding doors. The room will be clad in a tall wainscot of redwood panels salvaged from the old building. The kitchen will open into this space.

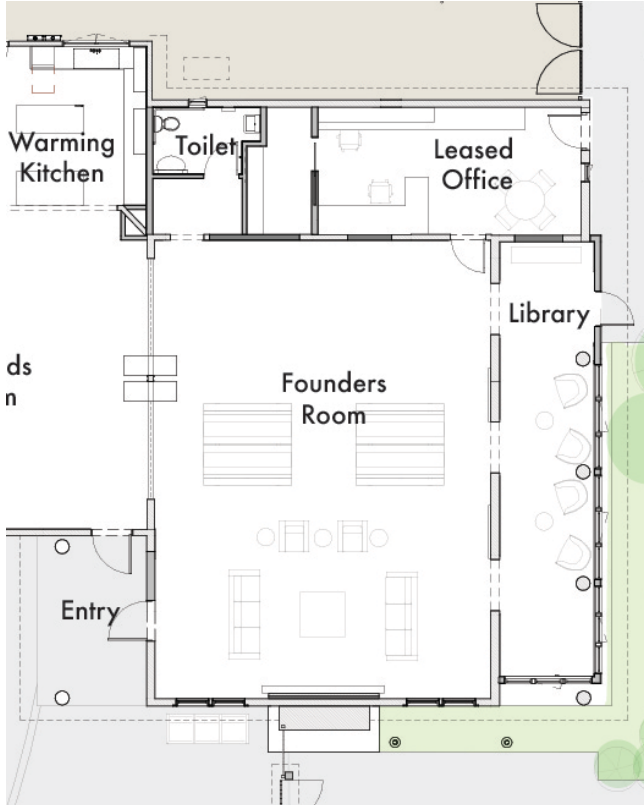


VIEW FROM LEGENDS ROOM TO COURTYARD



© Fairchild Broms Design Artist Conception - details subject to change in final construction

FOUNDERS ROOM



The Founders Room will be a space that has permanent furnishings and will be the Community Living Room. The fireplace will have a large screen mounted over it and will be clad in the salvaged redwood panels.



FOUNDERS ROOM



The Founders Room will be a space that allows for many uses from study groups and meetings to socializing and game day events.

VIEW FROM LEGENDS ROOM TO FOUNDERS ROOM



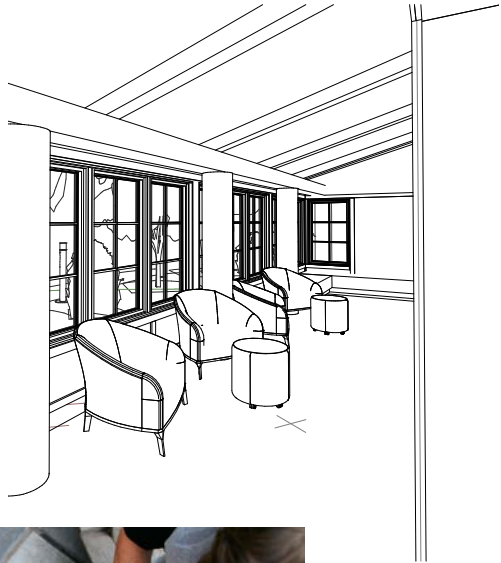
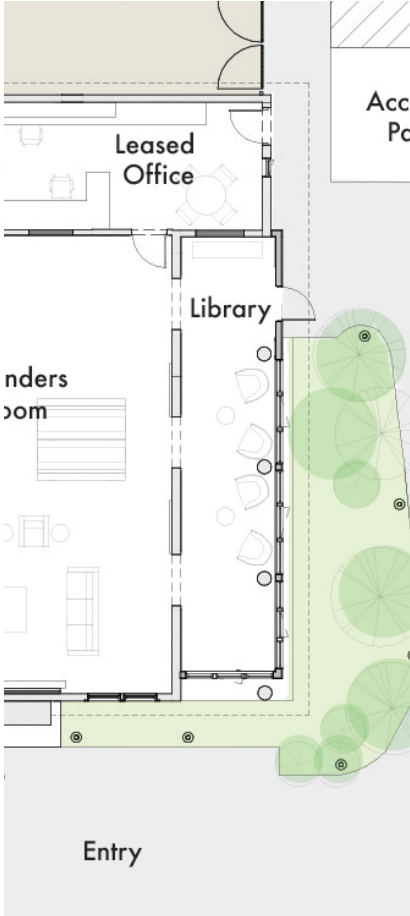
© Fairchild Broms Design Artist Conception - details subject to change in final construction

VIEW FROM LEGENDS ROOM TO FOUNDERS ROOM



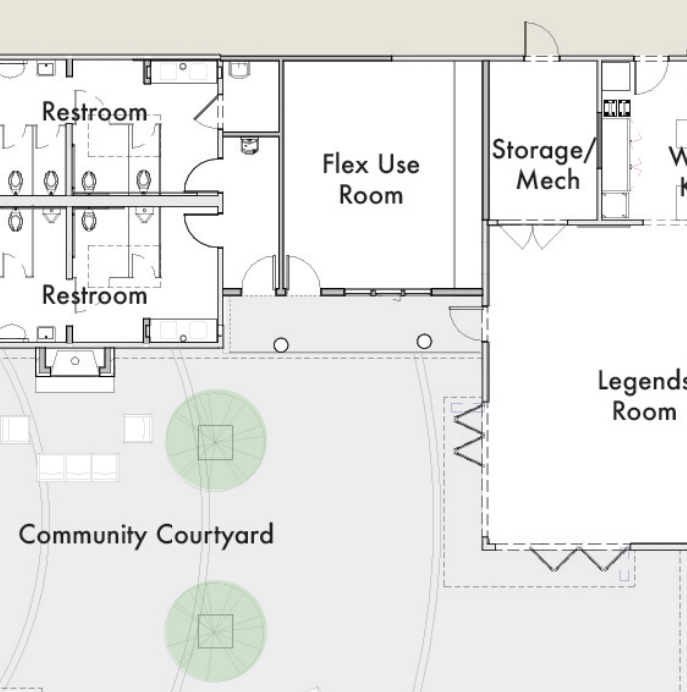
© Fairchild Broms Design Artist Conception - details subject to change in final construction

LIBRARY / ENCLOSED PORCH



Originally the front porch, the Library will be an enclosed, furnished space for relaxing and working. It will be a lit, welcoming beacon for the community, and house the community's history wall.

FLEX USE SPACE



The Flex use room can house a community workout space or other uses as the community's needs evolve.



PLAY / FITNESS AREA & OUTDOOR SHOWERS



The play/fitness area is an adaptable-use area that will provide for play experiences as well as outdoor workout opportunities.

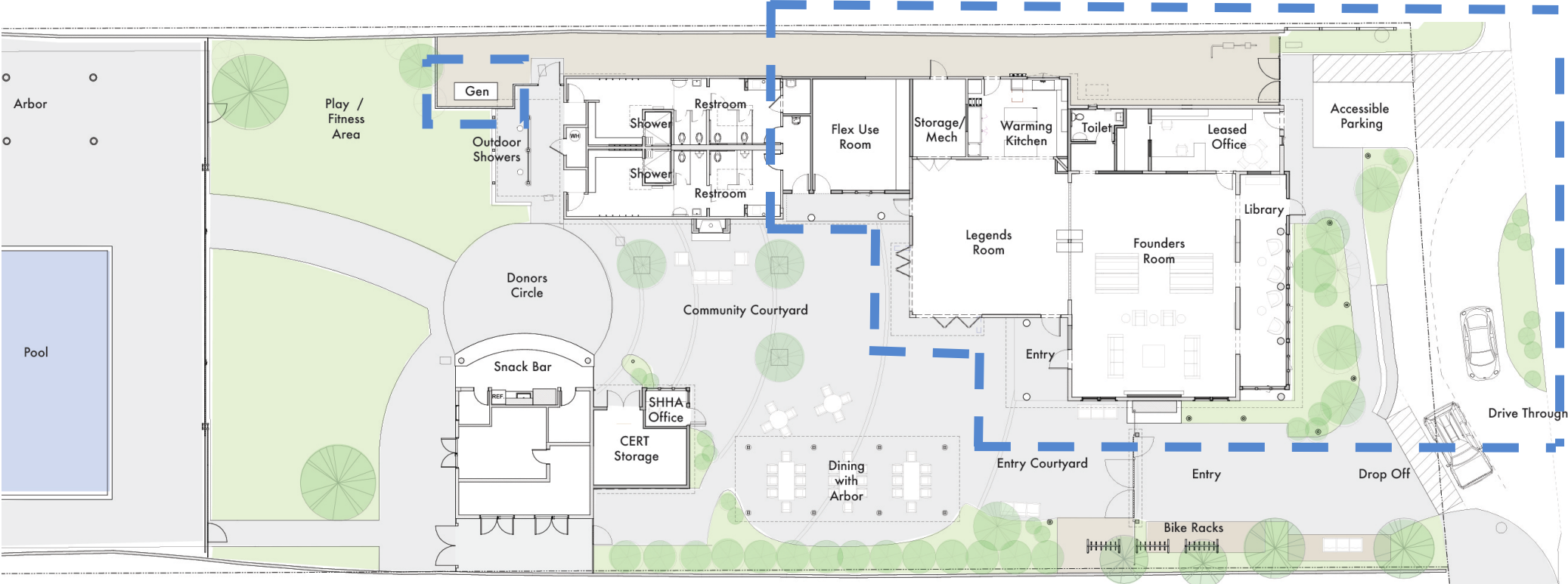
THE RENEWED COMMUNITY CENTER



© Fairchild Broms Design Artist Conception - details subject to change in final construction

WHERE WE ARE IN THE PROCESS NOW

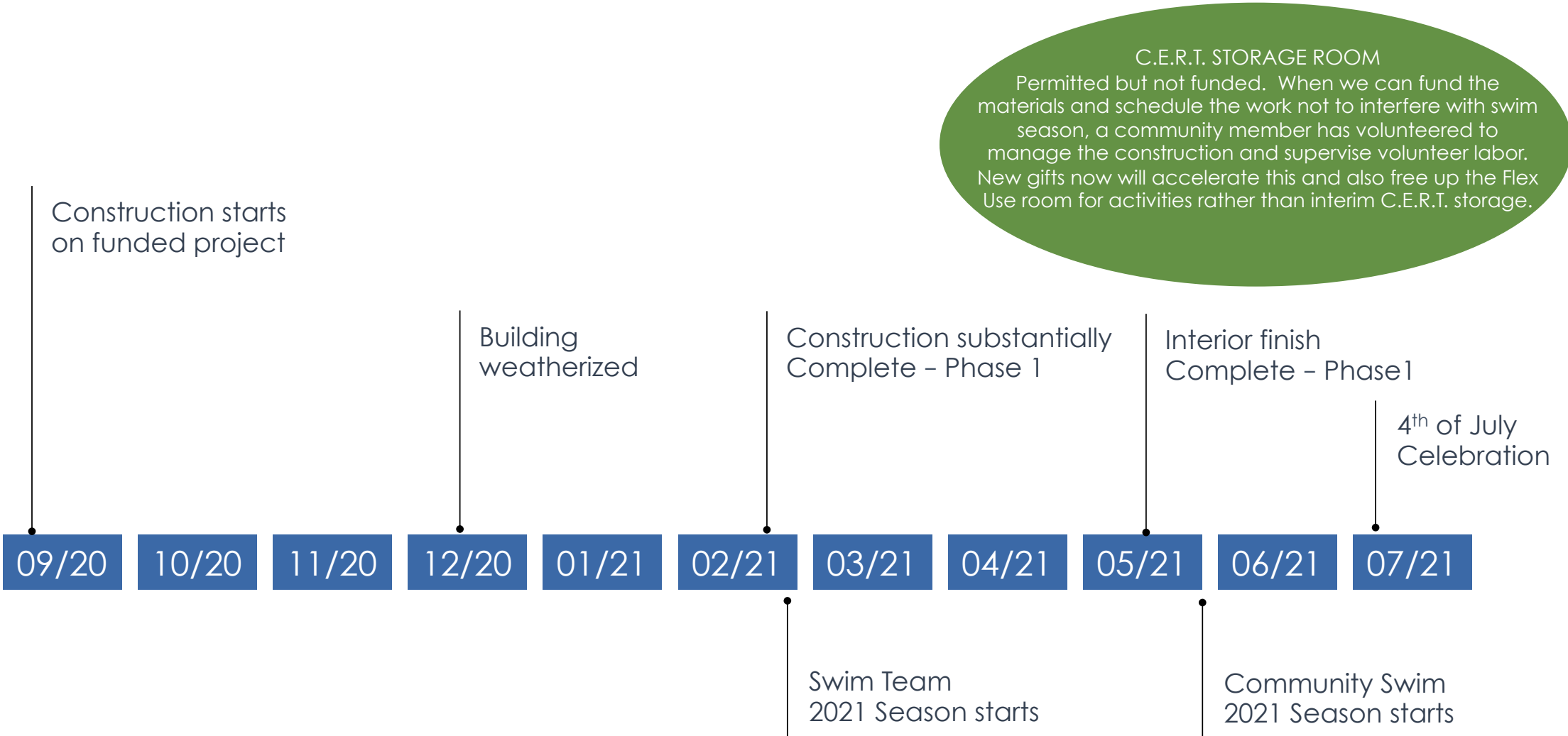
FUNDED PROJECT



Includes:

- Library / Enclosed Porch
- Founders Room
- Legends Pavilion
- Flex Use Room
- Warming Kitchen
- Leased Office space
- Powder Room
- Drive Through / Drop Off
- Fire Sprinklers and Alarm
- Seismic Upgrades
- Electrical Upgrades
- Site Drainage
- Emergency Generator
- New Doors and Windows
- New Energy Efficient Lighting
- New Heating and Cooling

FUNDED PROJECT SCHEDULE



FUNDED PROJECT FINANCES

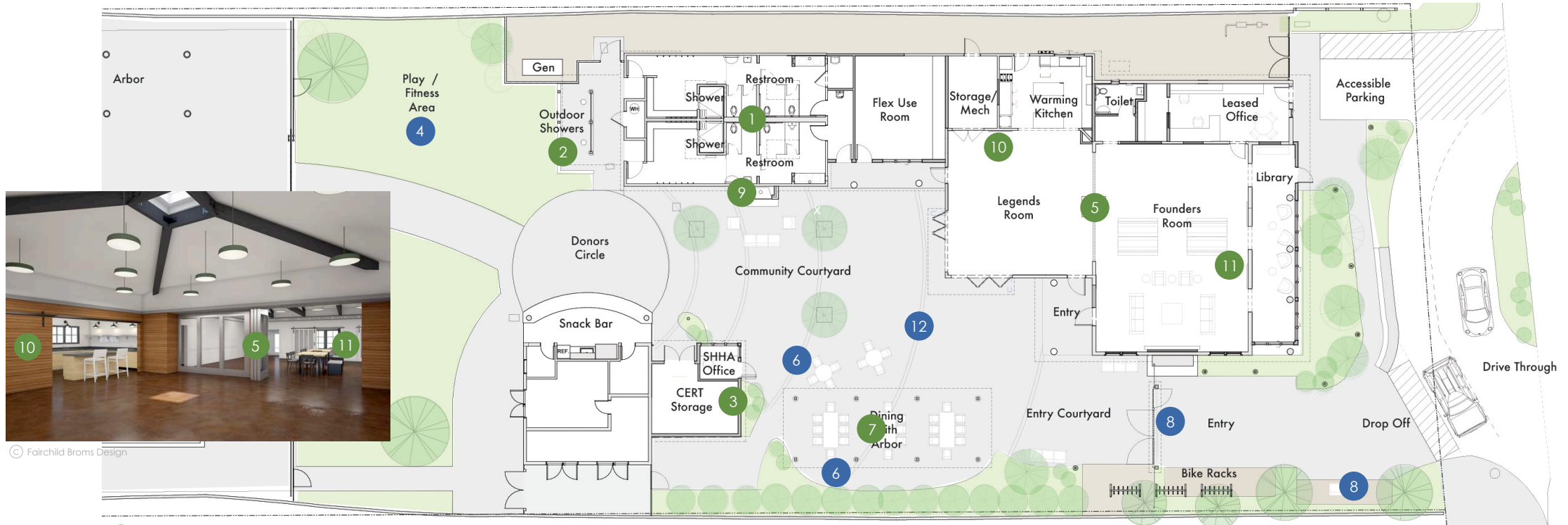
BUDGET FROM 9/30/20 TO COMPLETION OF PHASE 1 (THE FUNDED PROJECT)

Construction	1,330,000
Owner Costs	<u>323,000</u>
Costs to complete	1,653,000
Cash on Hand	1,273,000
Private Loans	270,000
Round 2 Pledged Gifts	<u>110,000*</u>
Total Funding	1,653,000

*Stronger pledge payment or new gifts now will enable acceleration of features not funded, many of which are engineered and permitted or do not require permitting. \$188,750 pledges outstanding at 9/30; \$146,000 considered highly collectible by 3/31/21.

NEXT STEPS / UPCOMING PROJECTS

UPCOMING PROJECTS - OUTDOOR



● Permitted, Designed & Engineered, Not Yet Funded

● Conceptualized, Not Yet Funded

- 1. Locker Room Upgrades
- 2. Outdoor Showers
- 3. Emergency Supply Storage (C.E.R.T.)/Site Office

- 4. Play Area
- 5. Movable Partitions(2 sets)
- 6. Outdoor Furniture
- 7. Dining Arbor
- 8. Entry Portal, Signage, Community Message Board

- 9. Outdoor Fireplace
- 10. Barn doors at Warming Kitchen (2)
- 11. Refurbished Original Sliding Doors (2)
- 12. Courtyard Paving (will be permitted as a separate project)

HELP TO ACCELERATE THESE PROJECTS!

PERMITTED, DESIGNED & ENGINEERED
Cost range: \$350,000 – \$390,000*

As funding becomes available these items can be moved directly into the current construction.

AMENITIES CONCEPTUALIZED
Not designed, engineered or permitted
Cost range: \$215,000 - \$240,000*

Volunteers and new gifts NOW can accelerate planning, design and building these items!

* Not including inflation
Refer to the Deeper Dive – Budget & Finances for more information

NEW GIFTS WELCOME FOR ANY UPCOMING PROJECTS

High impact features, more feasibility to fully fund and accelerate in the short term:

- Movable Acoustic Partition for immediate adaptability of interior spaces
- Outdoor fireplace for summer evenings in the courtyard
- Outdoor dining arbor and heaters for year-round pleasure
- Play/Fitness Area planning and design, for earliest possible kid satisfaction
- Emergency Supplies and C.E.R.T. storage – purchase materials to enable project with volunteer labor and professional volunteer construction management

Renovation of the locker/bathrooms and installation of outdoor showers are top priorities for full funding to build in Fall/Winter 2021. We will also seek funding for projects not accelerated

- Visit “Deeper Dive: Budgets & Funding” for more information

* Not including inflation

A DEEPER DIVE

(available after November 2nd)

HISTORY & PROCESS

BUILDING DESIGN & CHARACTER

RESILIENCY, SUSTAINABILITY & WELLNESS

BUDGETS & FUNDING

CONSTRUCTION

FURNITURE – COMING SOON

FLEX USE ROOM – COMING SOON

LANDSCAPE – COMING SOON

OUTDOOR PLAY – COMING SOON

OPERATIONS & ACTIVITIES – COMING SOON



WHAT YOU CAN DO:

- **Give now** with a new donation to accelerate benefits we can enjoy from opening day
- **Volunteer** to help
 - assist in the concept planning for the play/fitness area, flex room, history wall, and more.
 - assist in the planting of the demonstration Fire Smart landscape
 - plan activities to appeal to many ages and interests
- **Watch** us build and dive deeper at shha.org
- **Join** the Sleepy Hollow Homes Association now and select “recurring annually”
- **Support Round 3** fundraising (coming 2021) with your outreach and your giving
- **Congratulate** your neighbors and yourself for giving to get us all to this point!

Thank you Sleepy Hollow!



© Fairchild Broms Design Artist Conception - details subject to change in final construction

QUESTIONS?