



BUILDING DESIGN
&
CHARACTER

SLEEPY HOLLOW
COMMUNITY CENTER
RENOVATION

TABLE OF CONTENTS

BUILDING DESIGN TEAM

DESIGN REVIEW TEAM

DESIGN CONSIDERATIONS

A TOUR OF THE FULLY-REALIZED
COMMUNITY CENTER SITE

BUILDING FINISHES, LIGHTING & HARDWARE



BUILDING DESIGN TEAM

Jessica Fairchild – Fairchild Broms Design
Architecture & Interior Design

Rye Jorgensen – Jorgensen Engineering
Structural Engineering

Ray Keene, John Griffiths – Engineering 350
Mechanical, Electrical & Plumbing Engineering Basis of Design



DESIGN REVIEW TEAM

Spencer Adams

Luke Argilla

Jan Blackford

Kai Broms

Dave Grubb

John Grubb

Scott Hintergardt

Bradley Johnson

Steve Knox

Peter Mayer

Ryan Nail

Mark Sarkisian

Matt Testa

Anne Wagner



DESIGN CONSIDERATIONS

DESIGN CONSIDERATIONS



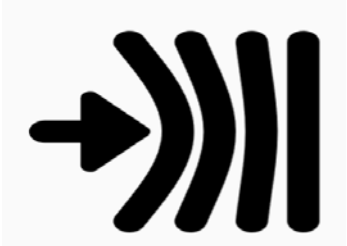
Building Renewal



Safety/Circulation



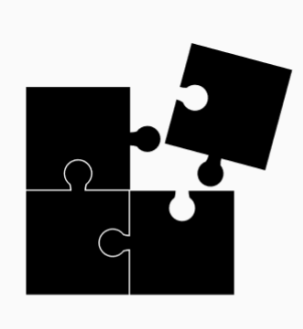
Wellness/Sustainability



Resiliency



Demonstration

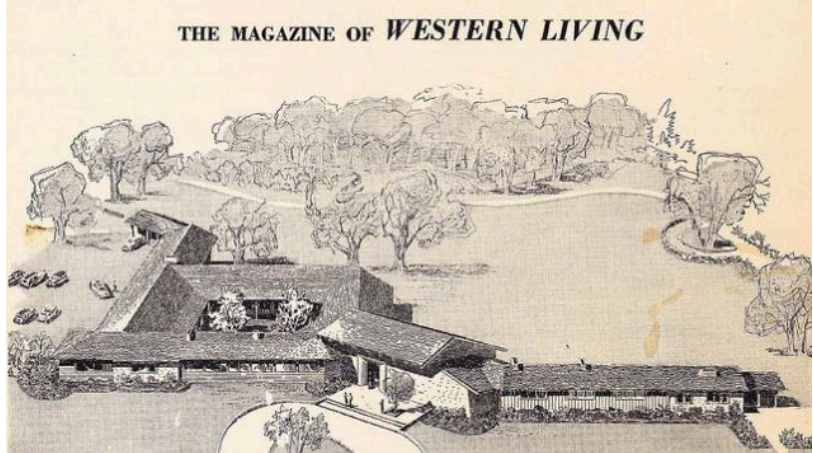


Adaptability

DESIGN CONSIDERATIONS – BUILDING RENEWAL



- Cliff May – The California Ranch House



DESIGN CONSIDERATIONS – BUILDING RENEWAL



- Eichler Homes



DESIGN CONSIDERATIONS – BUILDING RENEWAL



Accentuate the Happy Merger of Two Sleepy Hollow House Styles



The California Ranch House

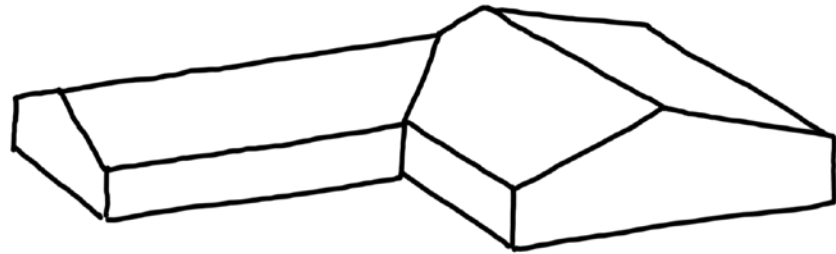


Eichler Homes

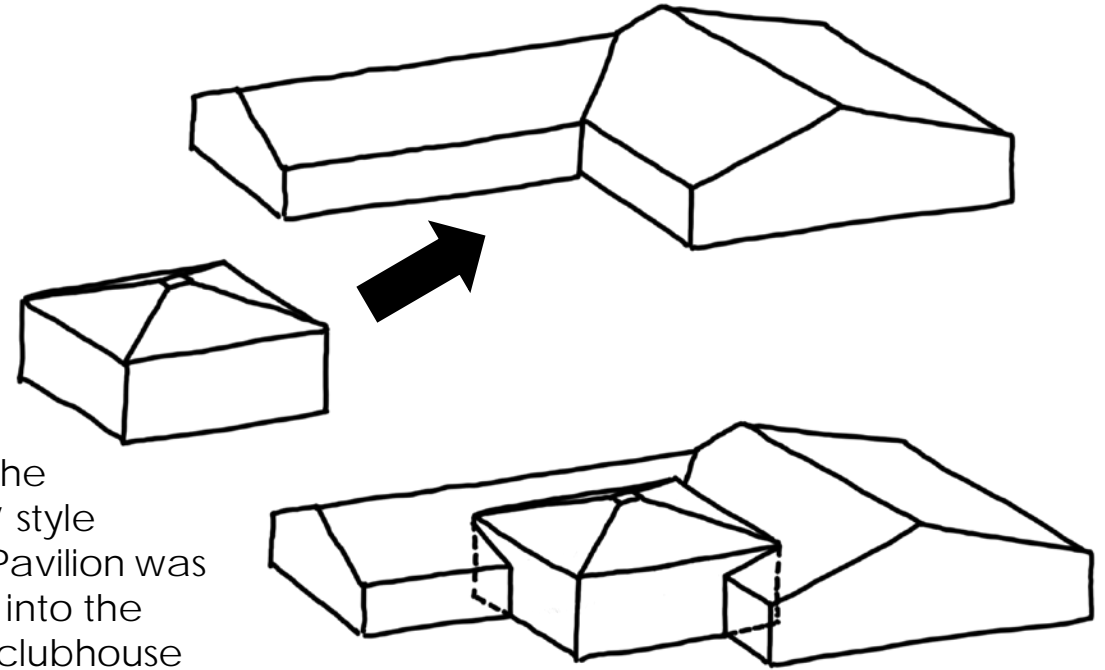


In 1955 the founders of the Homes Association gathered to build an "L" shaped clubhouse

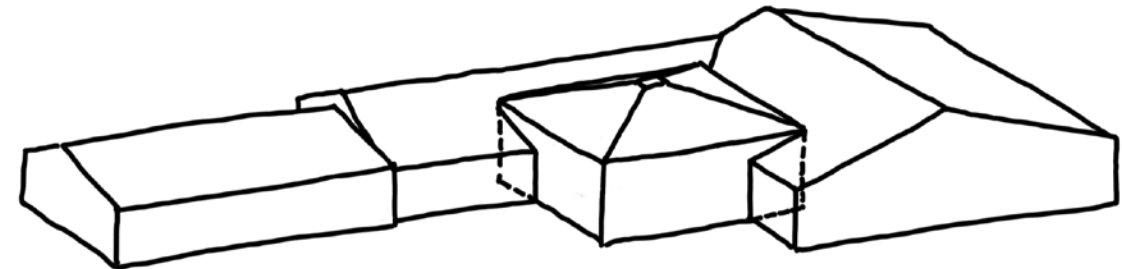




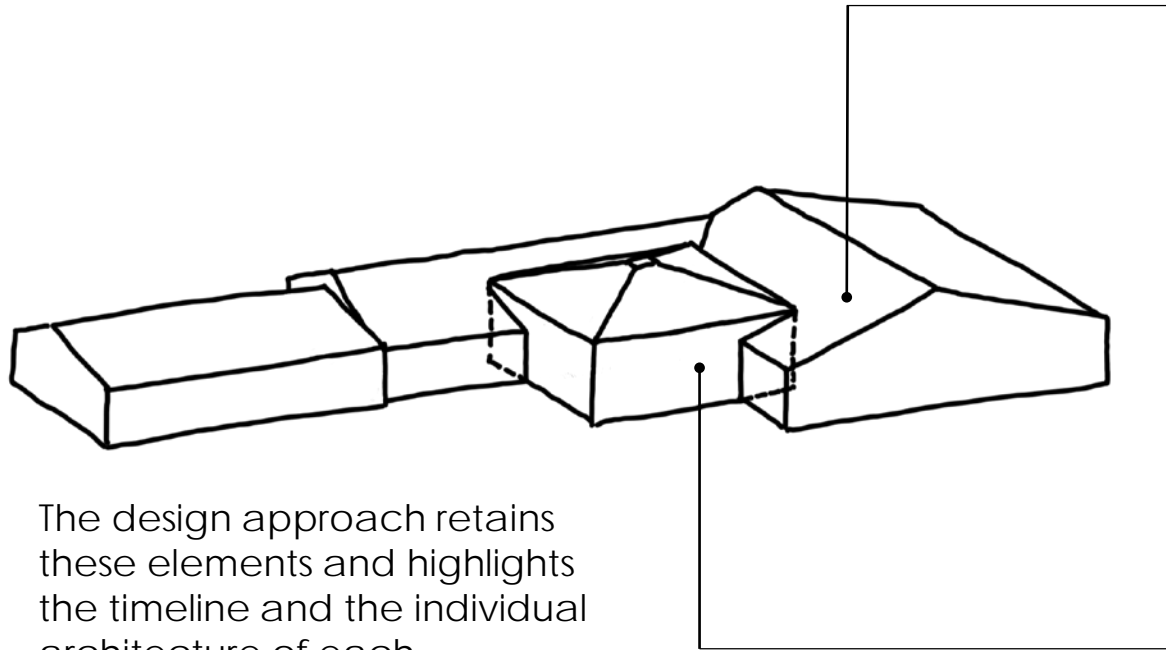
In the 1950's the founders of the Home Association gathered together to build an "L" shaped "California Ranch"-style clubhouse



In 1964 the "Eichler" style Dance Pavilion was inserted into the original clubhouse



The restroom/locker room portion was added as another element in the 1980's - in keeping with the original "Ranch House" aesthetic



The design approach retains these elements and highlights the timeline and the individual architecture of each.



The “Founders”
Made it happen

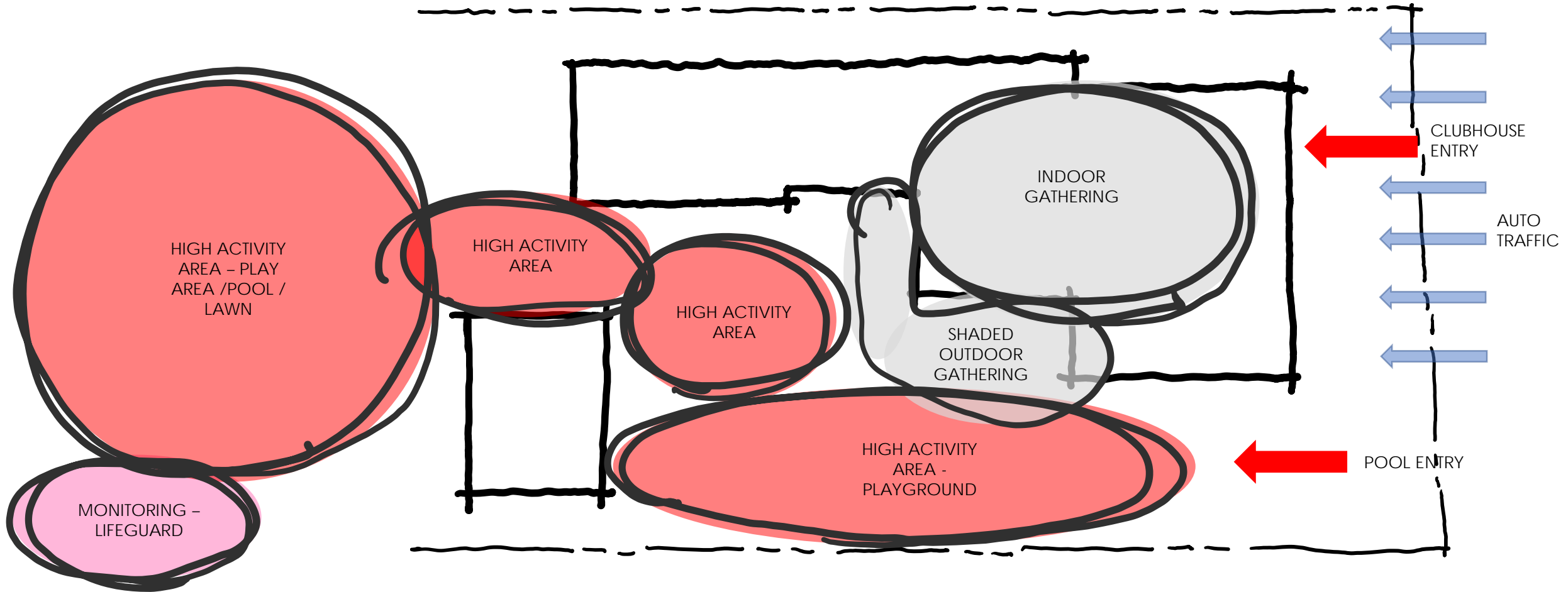


The “Legends”
Keep it going

DESIGN CONSIDERATIONS – SAFETY / CIRCULATION



Existing Conditions

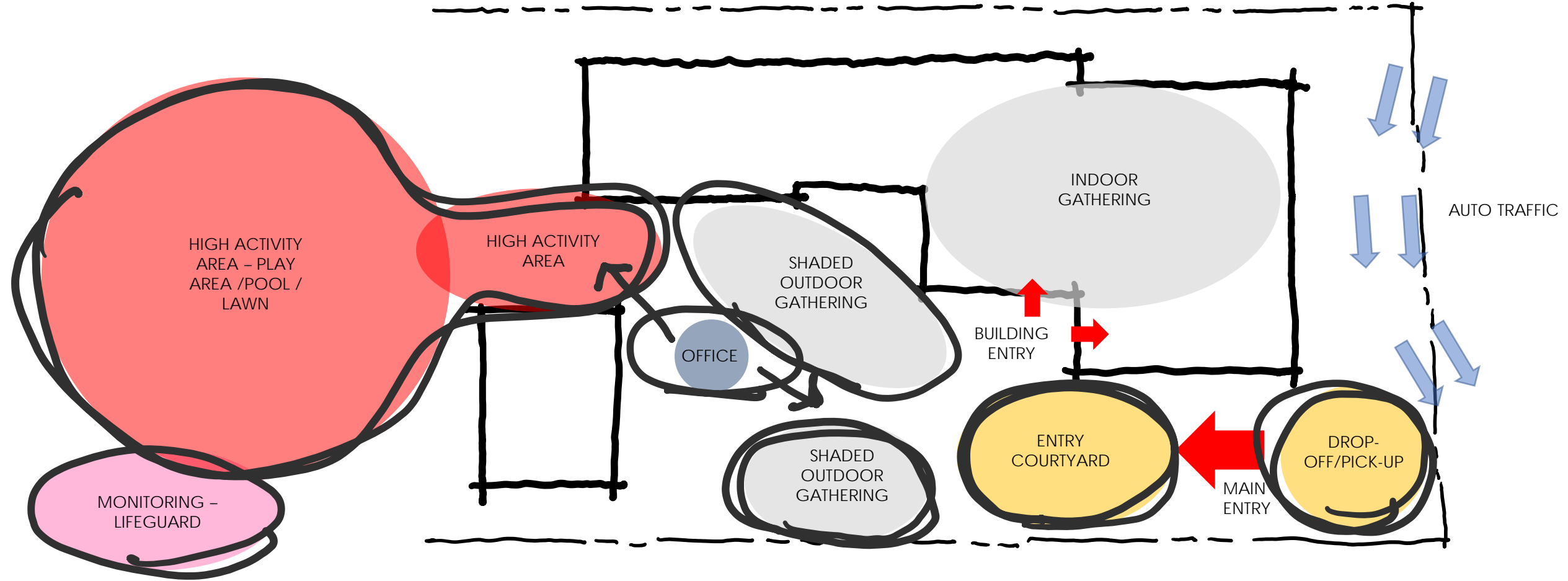


RECONSIDER ENTRY SAFETY AND ACTIVITY AREAS

DESIGN CONSIDERATIONS – SAFETY / CIRCULATION



New Site Plan

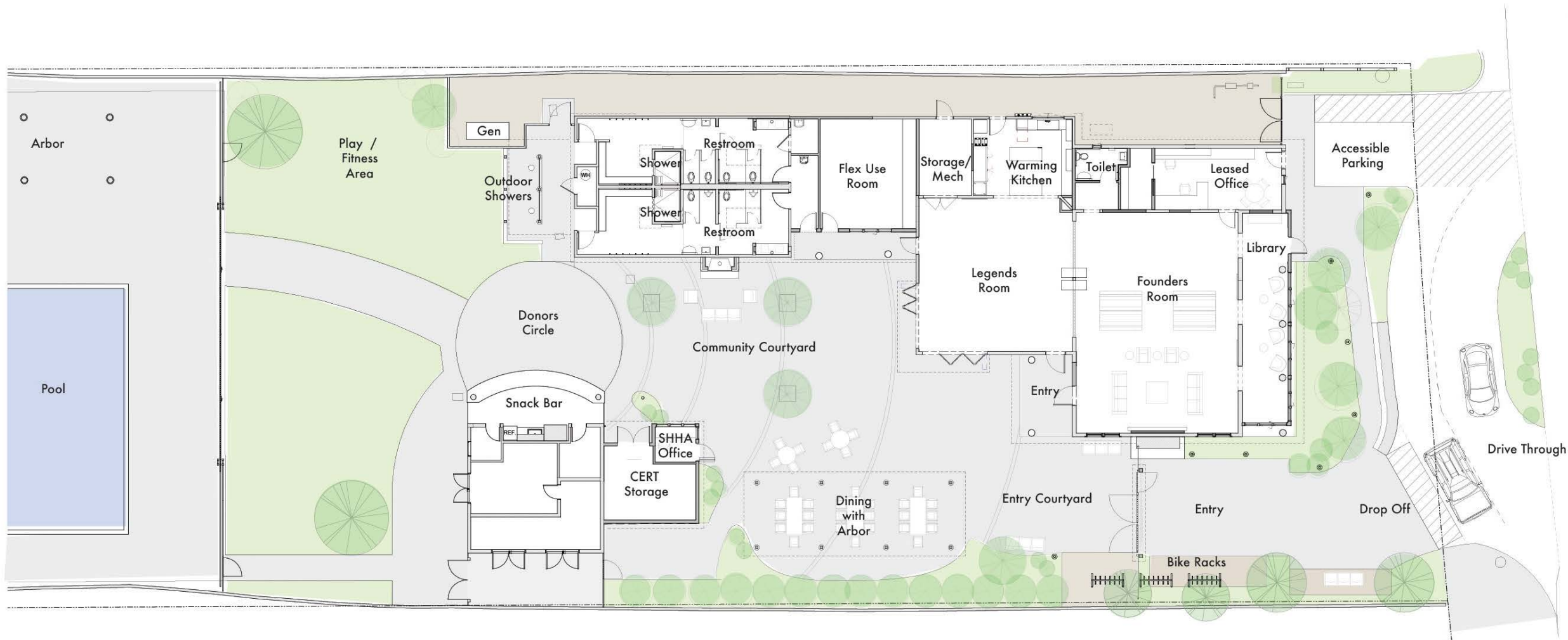


IMPROVED ENTRY SAFETY AND ACTIVITY FLOW

DESIGN CONSIDERATIONS – SAFETY / CIRCULATION



New Site Plan



DESIGN CONSIDERATIONS - RESILIENCY



Rally Point / Source of Information

Emergency Power

Robust Communications

Charging Stations

Emergency Supplies (C.E.R.T. – medical)

State of the Art Audio Visual

Emergency Shelter (Beds, Water, Food)

SHFPD Office Weekend Staffing





Planned and Future*

PREPARATION

- SHFPD Office and Disaster Recovery Command Center with rooftop antennas and communication equipment
- Community Emergency Response Team (C.E.R.T.) Emergency Supply Storage
- Shelter (bed, food, water)

DEMONSTRATION

- Building hardening – including new roof, exterior finishes, ember-resistant venting and defensible space
- Fire Smart / low-water landscaping

POWER OUTAGE/DISASTER RECOVERY

- Dual-fuel (natural gas and propane) Generator for building-wide systems
- 40 kW Solar System powering 78% of site energy needs
- Future Energy Storage System for after-dark powering of building systems
- Future Additional Solar Panels for 100% site energy needs
- Future Outdoor Charging Stations
- Future EV Charging

COMMUNICATION

- Charging Stations for handheld devices
- Audio-visual System
- Community Rallying Points

* Project features subject to change based on affordability.



Planned and Future*

BUILDING RE-USE/ CARBON SEQUESTRATION

- Re-used building shell, foundations, floor slab, wall paneling and historic doors

WATER CONSERVATION

- Low-flow plumbing fixtures at Kitchen, Powder Room and Locker Rooms
- Drainage percolation system at lawn to reduce storm water run-off into Bay
- Future exterior light-colored, permeable paving to reduce heat gain and encourage ground water re-charging
- Future Rain Barrels for irrigation of tree wells and planters

RENEWABLE ENERGY/ ENERGY CONSERVATION

- 40 kW Solar System powering 78% of site energy needs with the remainder generated with 100% "Deep Green" renewable resources = Zero Net Carbon Building
- New roof, windows/doors and building insulation to keep building warm in winter and cool in summer
- New multi-zoned heating and cooling system with air filtration and web-based controls
- New LED lighting and controls throughout
- Future Additional Solar Panels for 100% site energy needs
- Future Energy Storage System for after-dark powering of building systems
- New cool roof to reduce heat gain

RECYCLED PRODUCTS

- Ceramic tile with recycled content in Kitchen, Powder room and Locker rooms
- Carpet at Leased Office contains recycled content.

ZERO WASTE INITIATIVE

- Water-bottle Filling Station to eliminate plastic water bottles
- Zero-waste Operational Commitment: compost, metal and plastics recycling and compostable service ware

ELECTRIC VEHICLES

- Future EV Charging

* Project features subject to change based on affordability



COMMUNITY

- Shaded Outdoor Gathering Spaces
- Future movable acoustic partition system between the Legends and Founders rooms to reduce size of group gatherings
- Sliding doors at Library for small group gatherings

MIND

- AED Defibrillator and First Aid Station
- Disaster preparedness and Education
- Secured Front Gate to allow for health screening checks

AIR

- Bi fold glass doors at Legends Room for Indoor/Outdoor Connection and fresh air
- Operable Windows Throughout

WATER

- Baseline and annual water testing
- Water-bottle Filing Station

LIGHT

- Views and Natural Light
- Dimmable Lighting

THERMAL COMFORT

- New Multi-zoned Heating and Cooling System with 100% Outside Air delivery capability and MERV-13 Filtration

MATERIALS

- Nature-based cleaning supplies
- Furniture selected with no harmful materials or finishes
- Onsite staff for cleaning and sanitizing

MOVEMENT

- Fitness Equipment in Flex Use Room
- Play & Outdoor Fitness Area
- Lockable racks for manual and electric bicycles

* Project features subject to change based on affordability



1939 Golden Gate International Exposition Demonstration House
Sleepy Hollow, CA



Bio-Diverse Fire Smart Landscape

Fire Resistant Building Hardening

Defensible Space

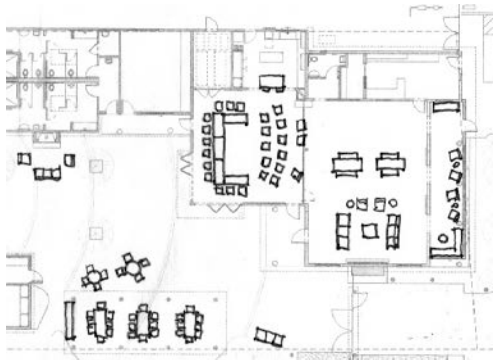
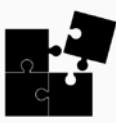
Climate Resistance

Water Conservation

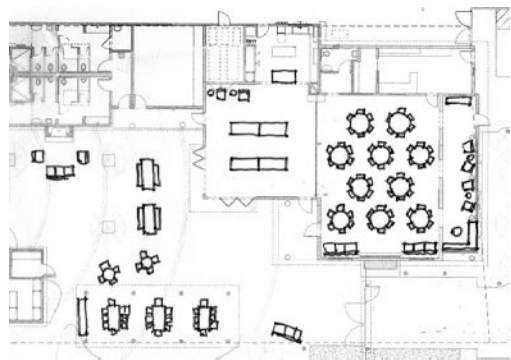
Storyboard / Labels



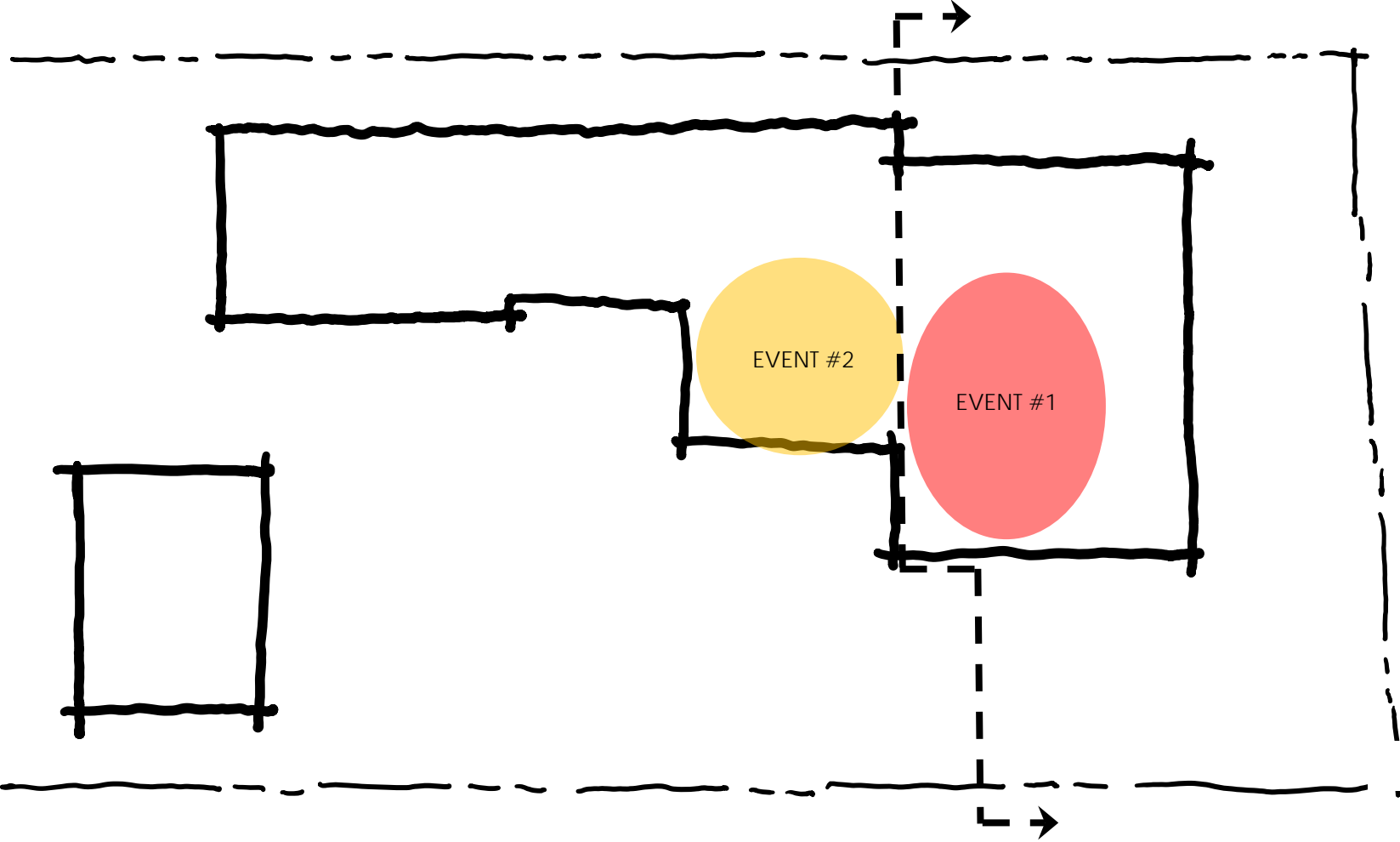
DESIGN CONSIDERATIONS – ADAPTABLE USES



Homeowners Meeting



Party / Crab Feed



DESIGN CONSIDERATIONS – ADAPTABLE USES



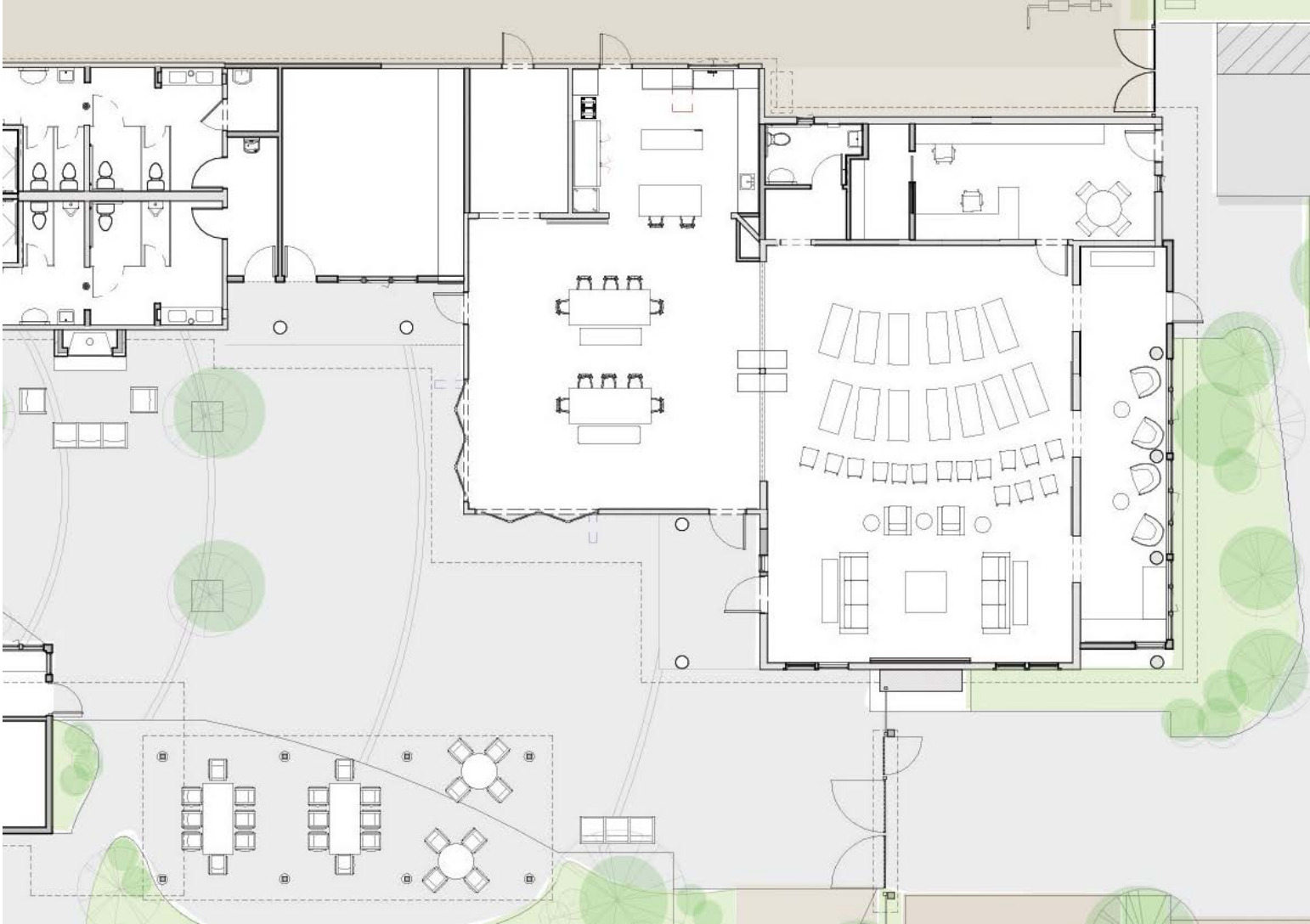
Emergency Shelter



DESIGN CONSIDERATIONS – ADAPTABLE USES



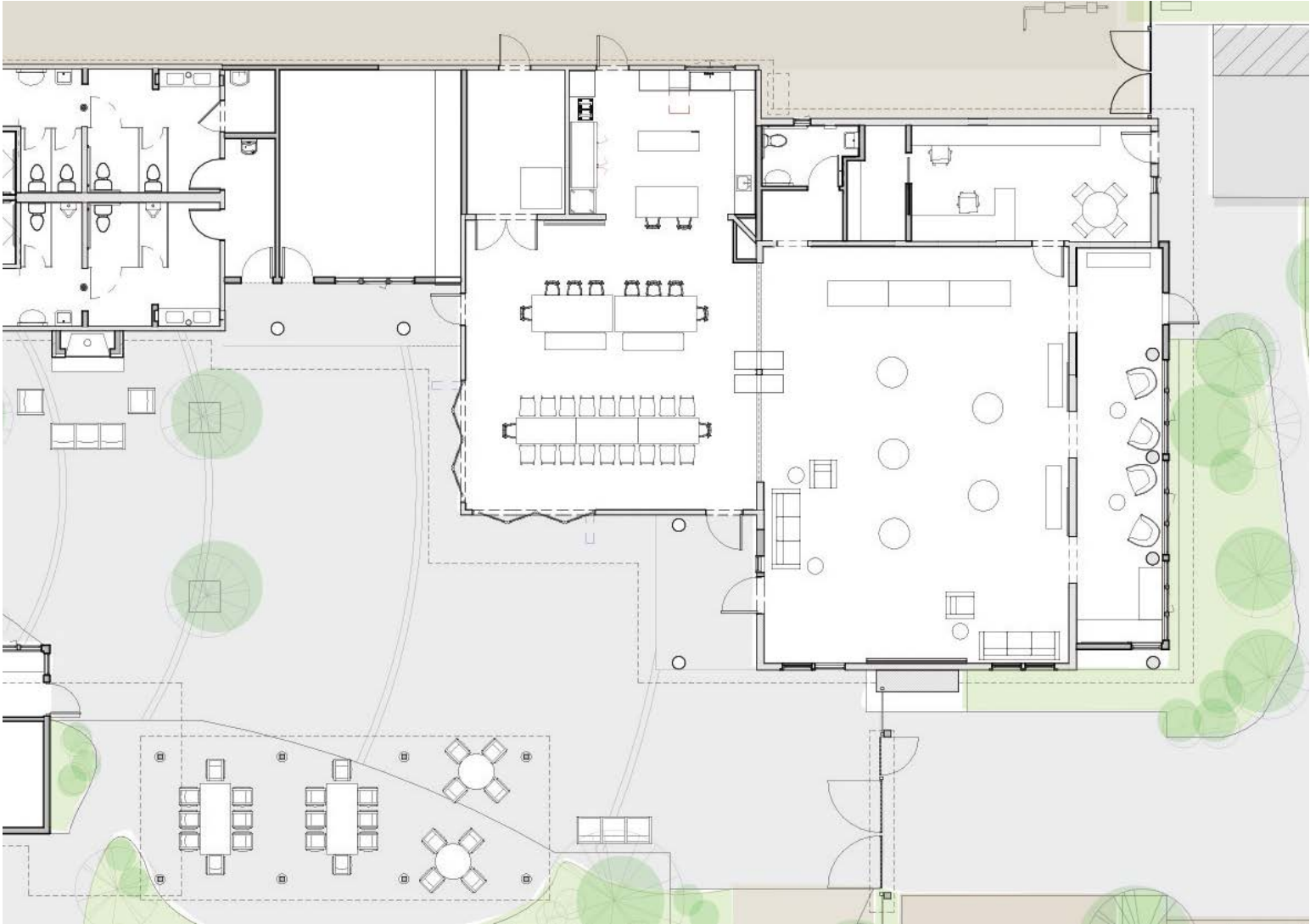
Movie Night



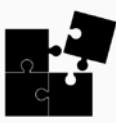
DESIGN CONSIDERATIONS – ADAPTABLE USES



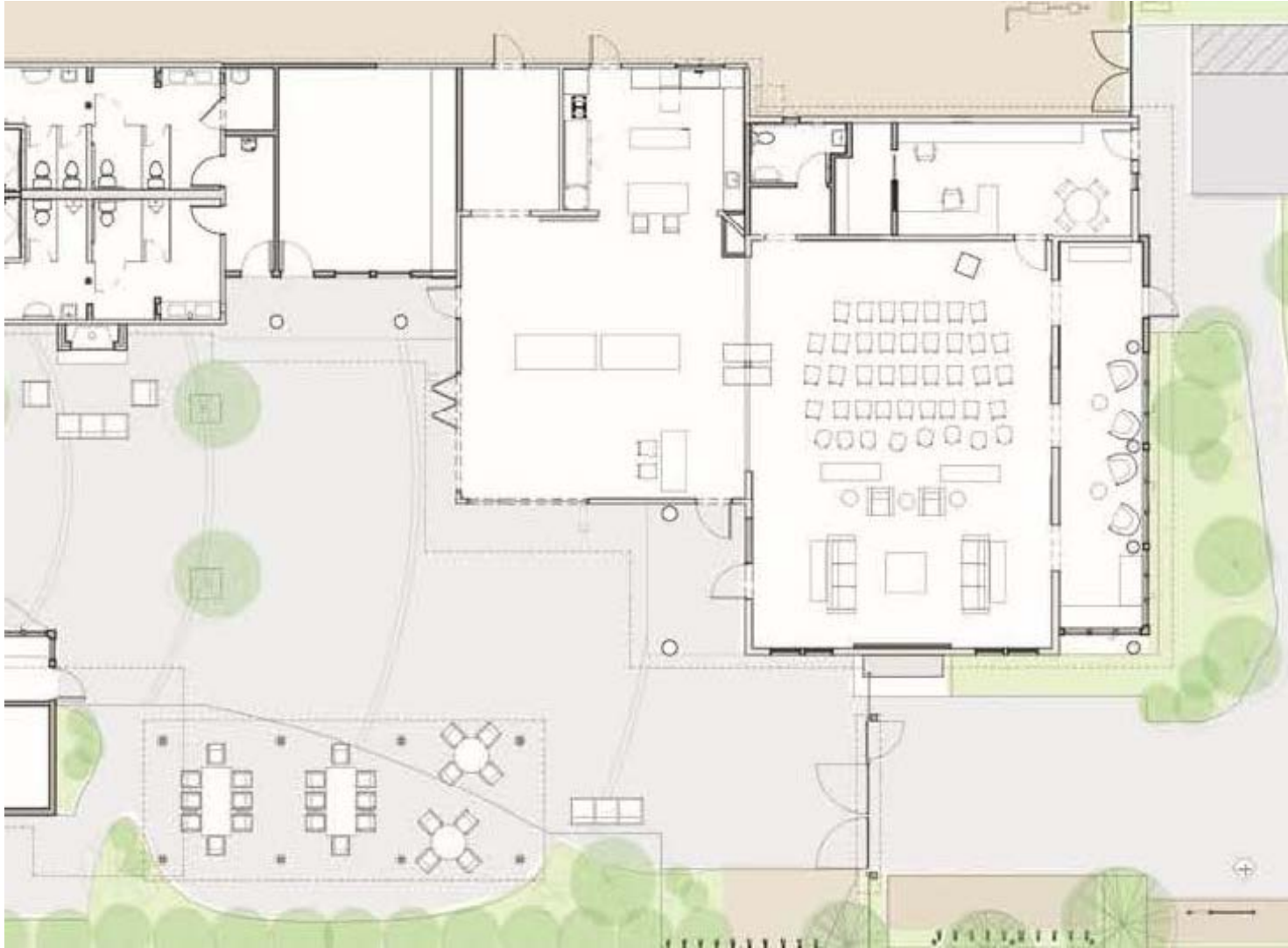
Holiday Party



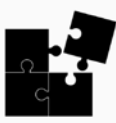
DESIGN CONSIDERATIONS – ADAPTABLE USES



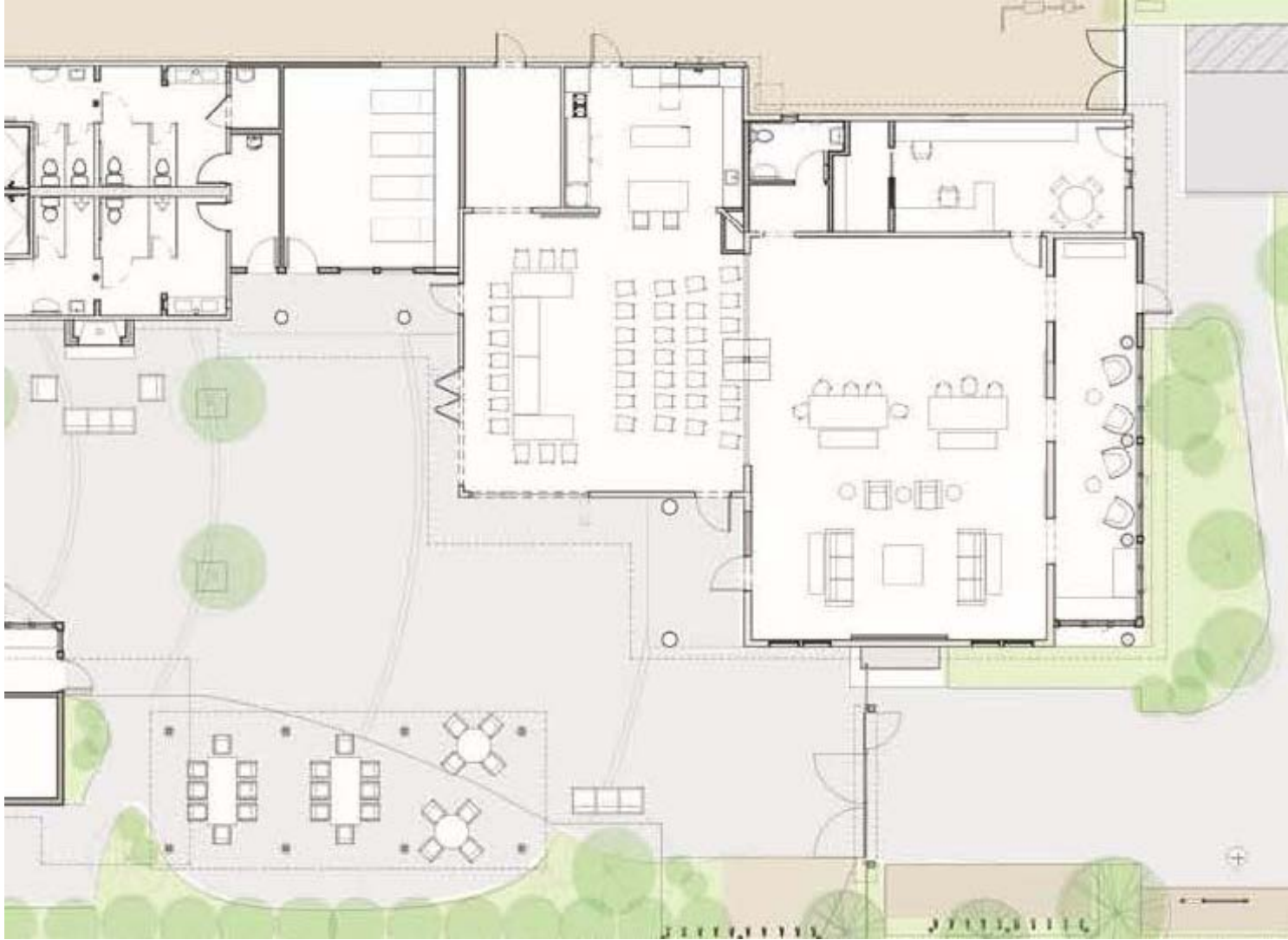
Educational Lecture



DESIGN CONSIDERATIONS – ADAPTABLE USES



Board Meeting / Seminar



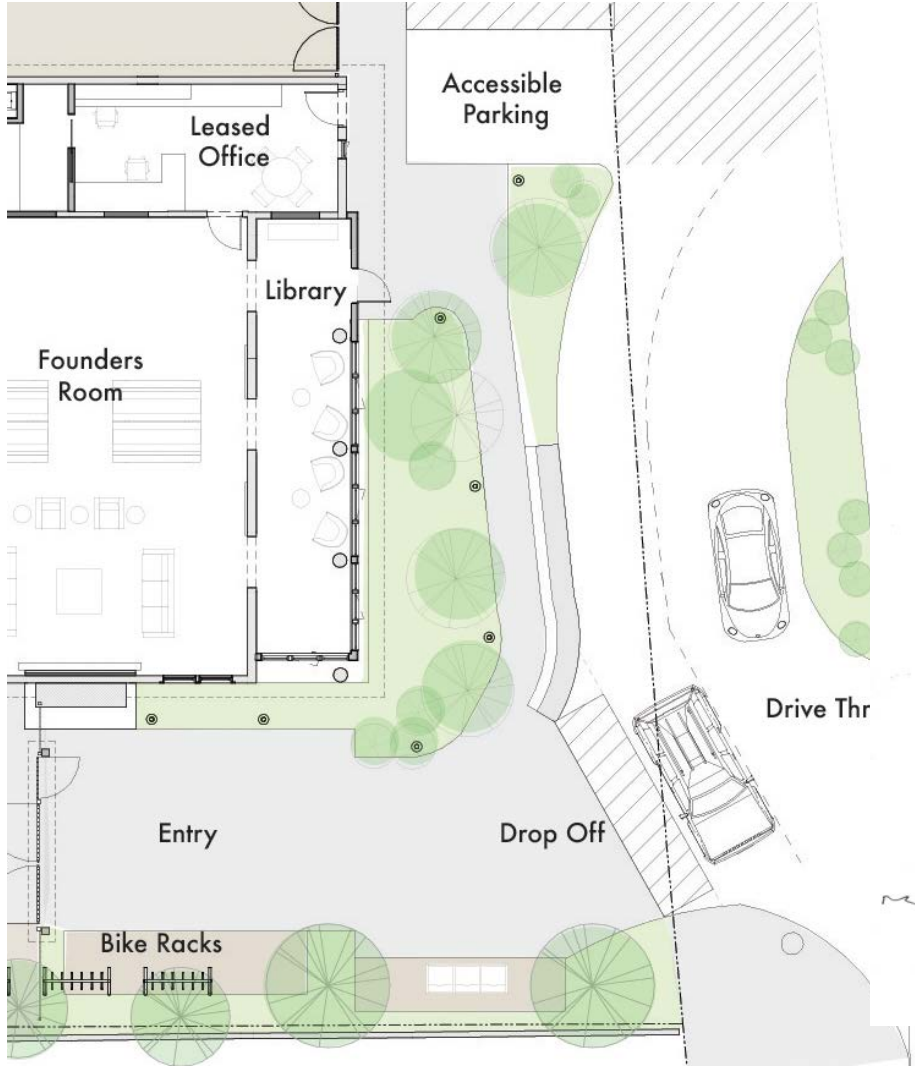
A TOUR OF THE FULLY-REALIZED COMMUNITY CENTER SITE

THE RENEWED COMMUNITY CENTER



© Fairchild Broms Design Artist Conception - details subject to change in final construction

ENTRY & DROP OFF

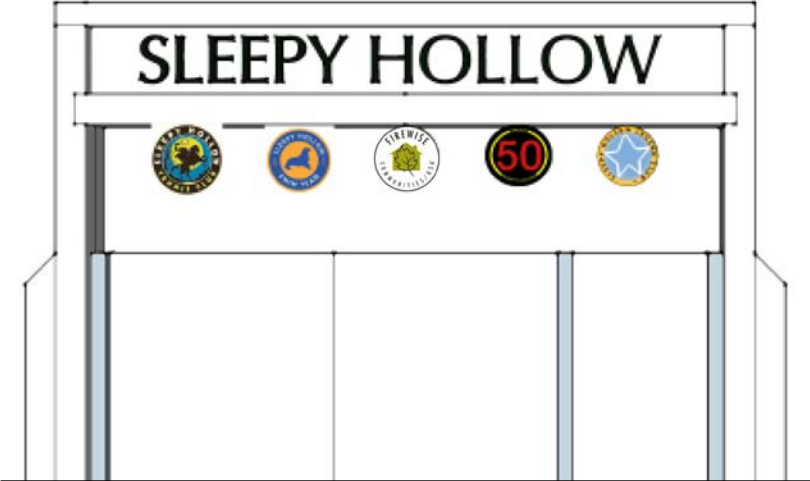
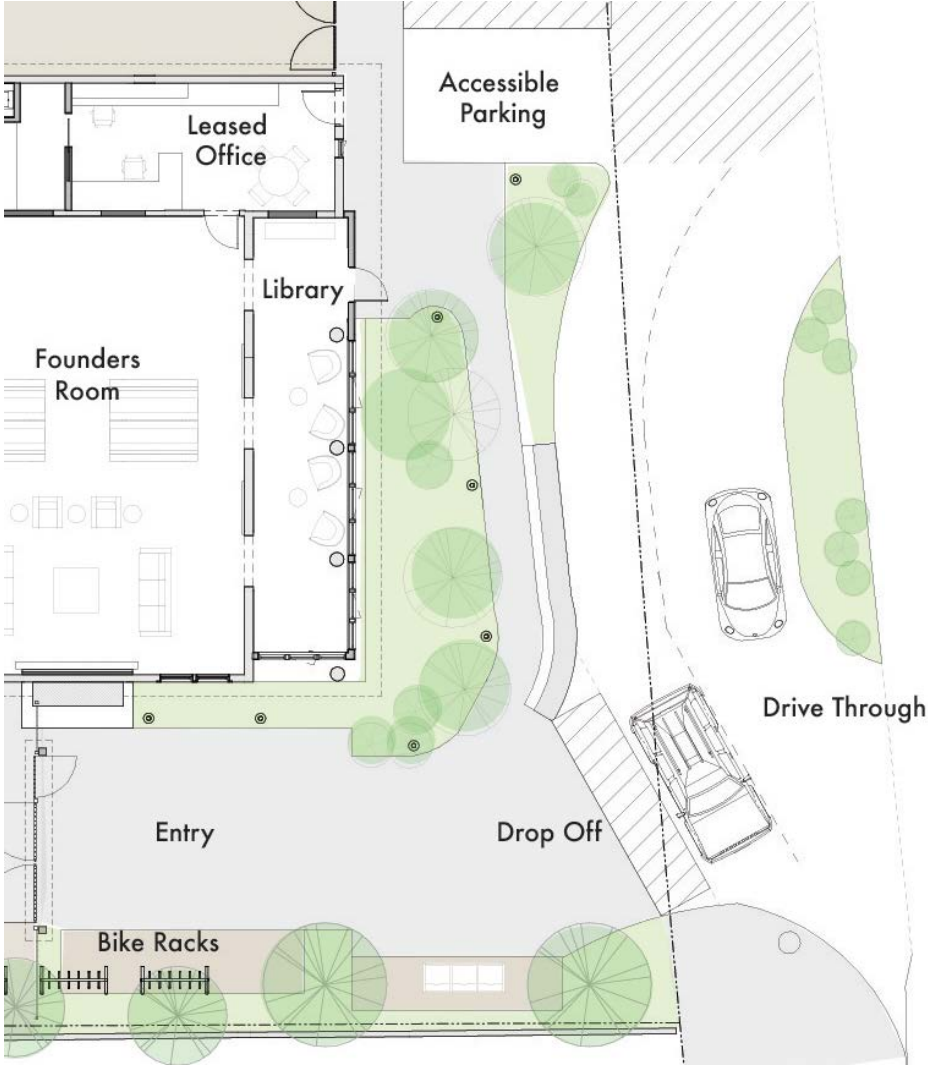


Community message Board and library



The entry is designed to provide a safe drop off and clear entry point to the site. This also provides a place for community information with a community message board and direct access to the Fire Board leased office.

ENTRY & DROP OFF



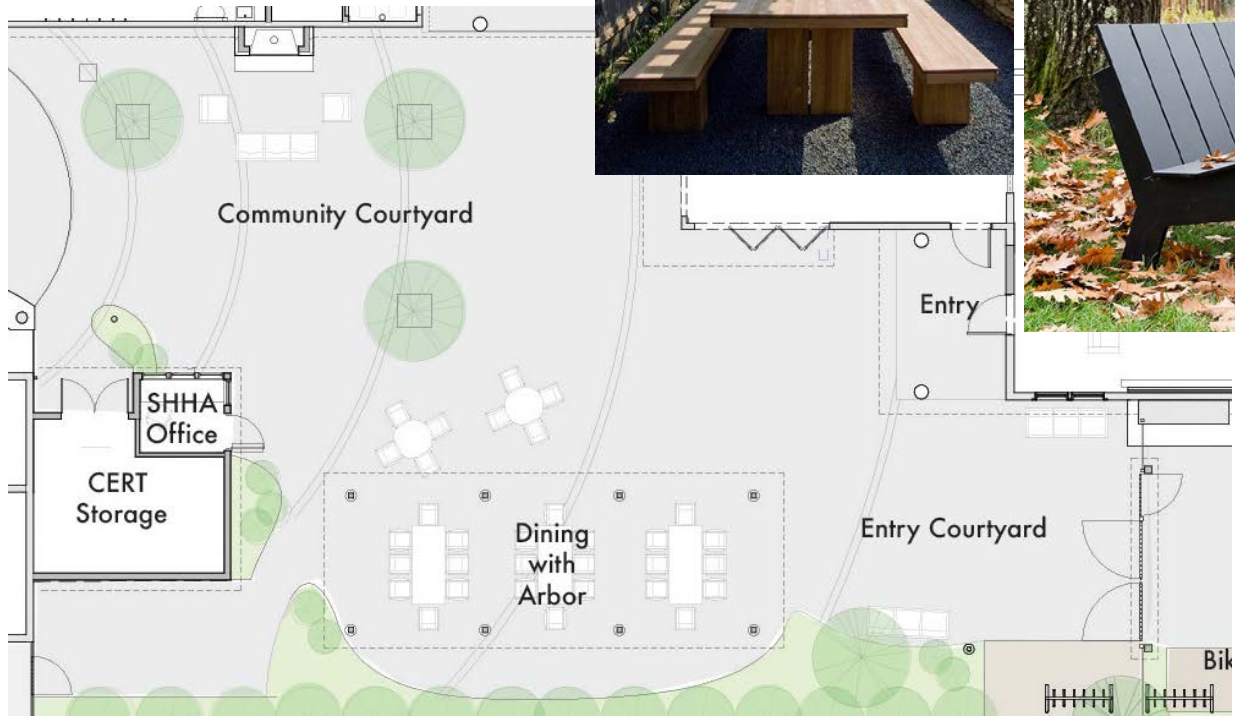
Entry portal with community organizations & recognition. Portal design is continuing to be developed in parallel with the new community logo development now underway.



The entry portal will highlight all the active organizations affiliated with Sleepy Hollow and will provide flexibility for additions in the future.

COURTYARDS

The Community Courtyard links the Entry Court and the existing Donor Circle to provide space for the community to gather, celebrate and rally in an emergency. The office and C.E.R.T. Storage will have direct access off this space. The Dining arbor will be a covered space for outdoor community gatherings with a connection to the Legends Room and Warming Kitchen.



VIEW FROM ENTRY GATE



© Fairchild Broms Design Artist Conception - details subject to change in final construction

VIEW FROM THE COMMUNITY COURTYARD



© Fairchild Broms Design Artist Conception - details subject to change in final construction

LEGENDS ROOM



The Legends Room will provide direct access to the Community Courtyard with two 12' wide folding doors. The room will be clad in a tall wainscot of redwood panels salvaged from the old building. The kitchen will open into this space.

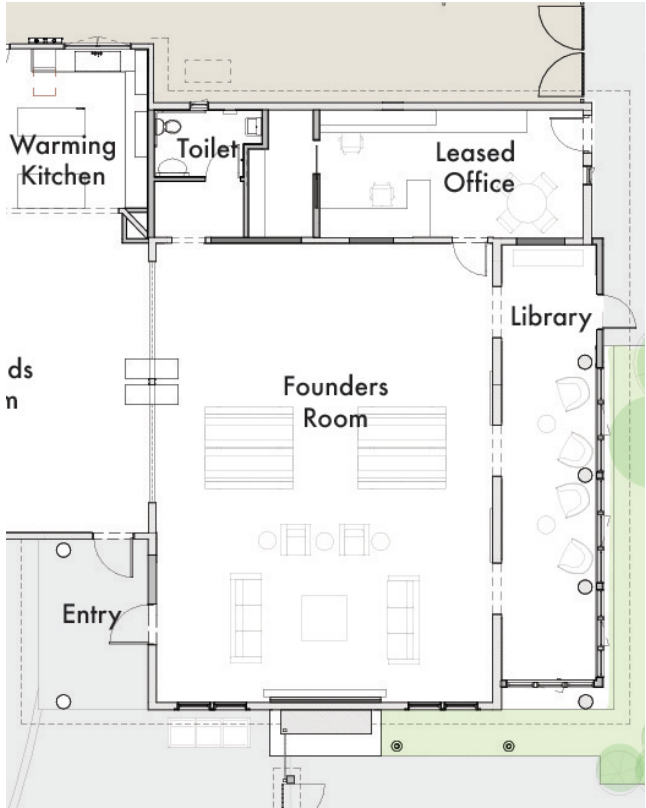


VIEW FROM LEGENDS ROOM TO COURTYARD



© Fairchild Broms Design Artist Conception - details subject to change in final construction

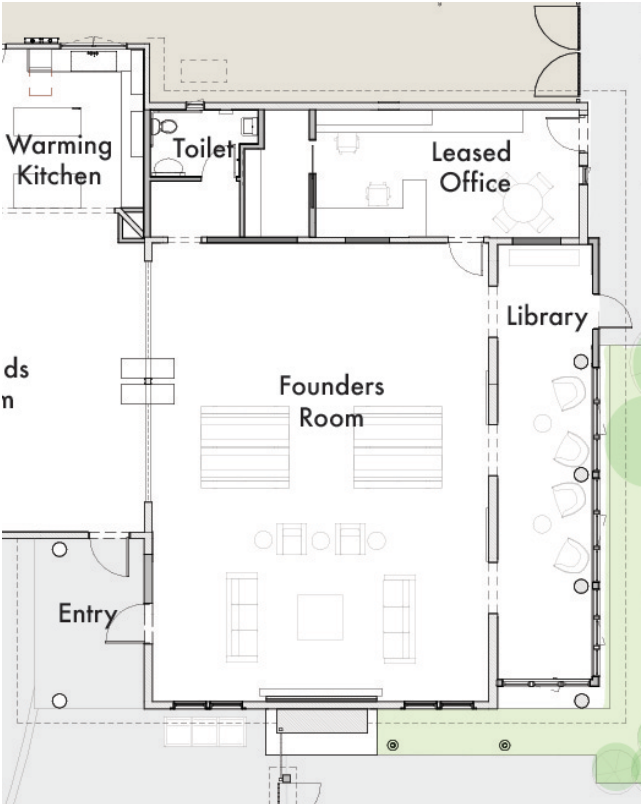
FOUNDERS ROOM



The Founders Room will be a space that has permanent furnishings and will be the Community Living Room. The fireplace will have a large screen mounted over it and will be clad in the salvaged redwood panels.

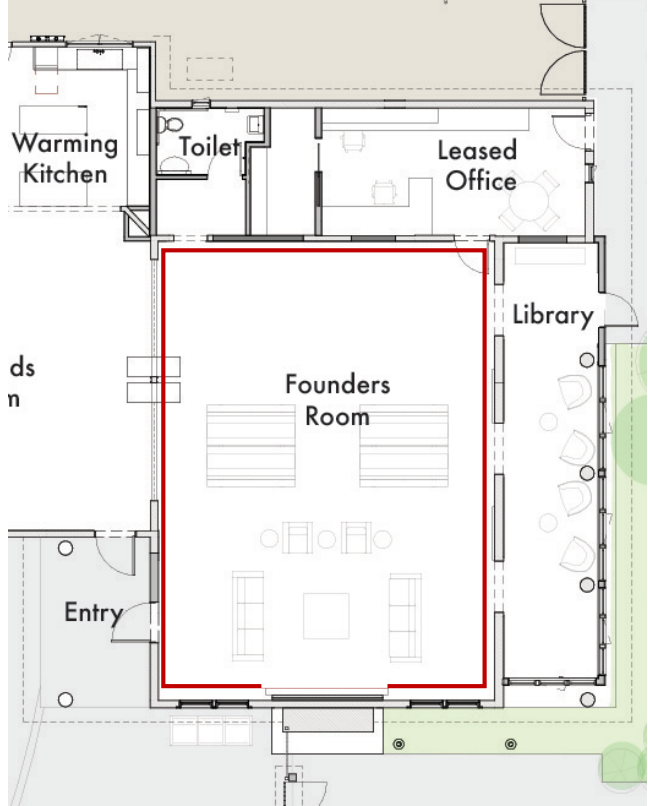


FOUNDERS ROOM

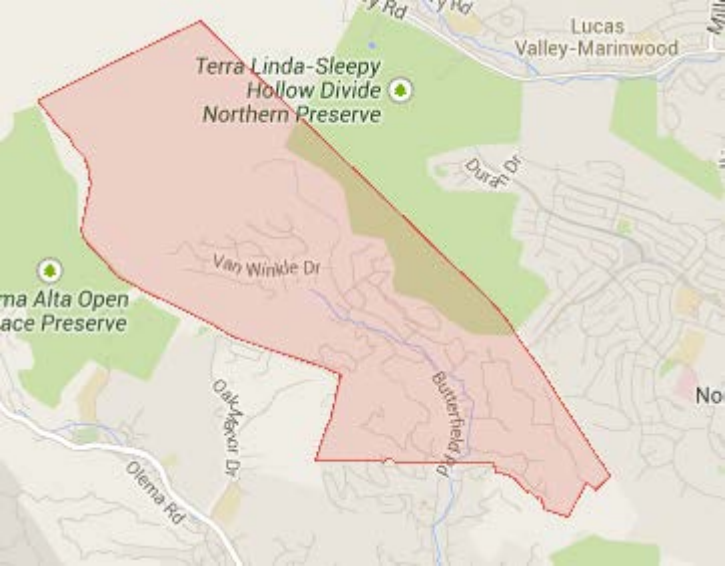


The Founders Room will be a space that allows for many uses from study groups and meetings to socializing and game day events.

FOUNDERS ROOM



WALL GRAPHIC (SHOWN IN RED) IS CONTINUOUS BAND RUNNING NEAR TOP OF WALL AND INCLUDES ALL STREETS WITHIN THE SLEEPY HOLLOW FIRE PROTECTION DISTRICT



CONCEPT IMAGE - SAN FRANCISCO FERRY BUILDING



- Angela Baltus
- Butterfield
- Catskill
- Crane Deer Hollow
- De Burgh
- Dutch Valley Estates
- Fawn Forrest
- Fox Garden
- Rock Green Valley
- Greensburgh
- Hidden Valley
- Ichabod Irving
- Katrina
- Knickerbocker
- Legend Lisa
- Luzanne
- Manitou
- Martling
- Mather
- Oak Crest
- Oak Knoll
- Quail
- Raven
- The Alameda
- Sleepy Hollow
- Stuyvesant
- Sulphur Spa
- Tappan
- Tarry
- Triple C Ranch
- Van Hooten
- Van Ripper
- Van Tassel
- Van Winkle
- West Oak Knoll
- Wilder
- Whiteplains

VIEW FROM LEGENDS ROOM TO FOUNDERS ROOM



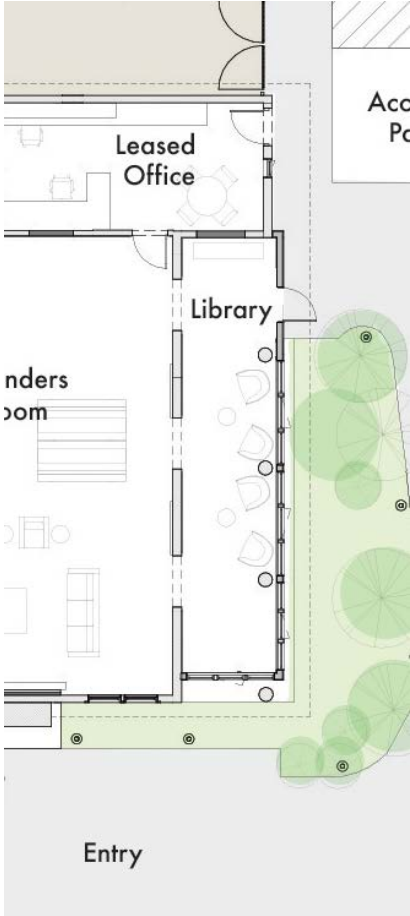
© Fairchild Broms Design Artist Conception - details subject to change in final construction

VIEW FROM LEGENDS ROOM TO FOUNDERS ROOM



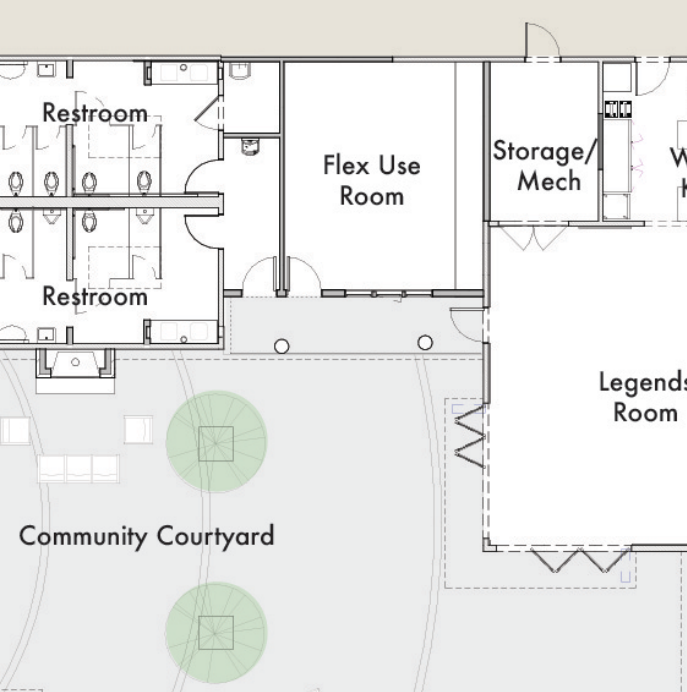
© Fairchild Broms Design Artist Conception - details subject to change in final construction

LIBRARY / ENCLOSED PORCH



Originally the front porch, the Library will be an enclosed, furnished space for relaxing and working. It will be a lit, welcoming beacon for the community, and house the community's history wall.

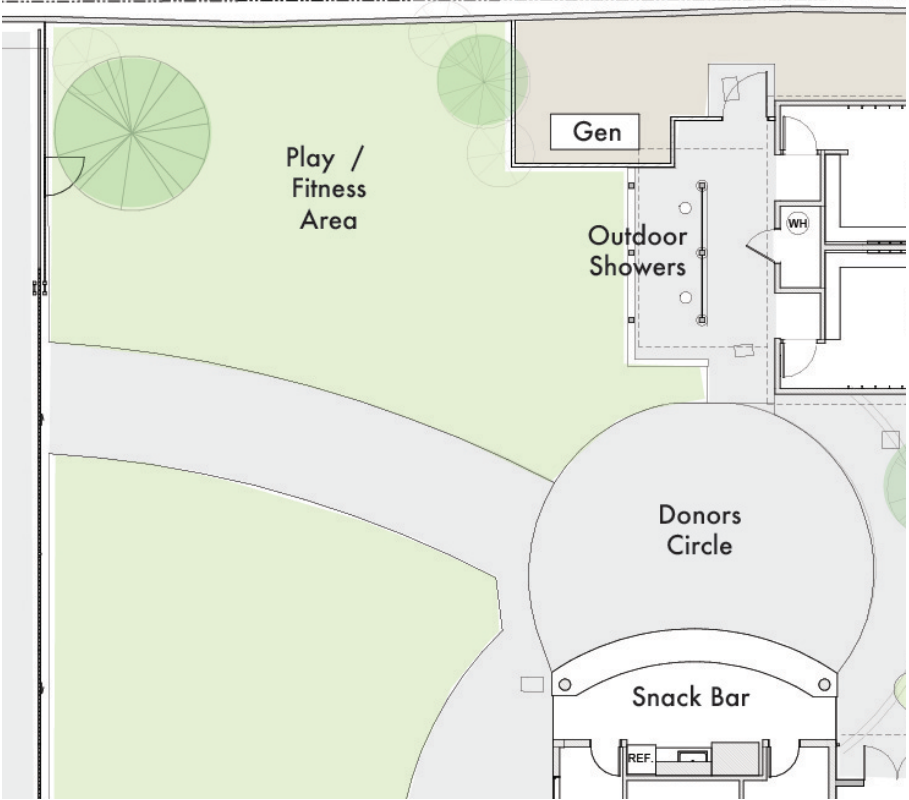
FLEX USE SPACE



The Flex use room can house a community workout space or other uses as the community's needs evolve.



PLAY / FITNESS AREA



The play/fitness area is an adaptable-use area that will provide for play experiences as well as outdoor workout opportunities.

THE RENEWED COMMUNITY CENTER

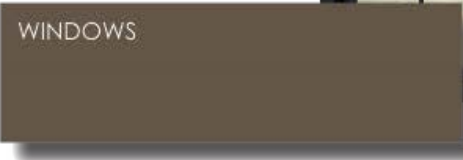


BUILDING FINISHES, LIGHTING & HARDWARE

BUILDING EXTERIOR FINISHES



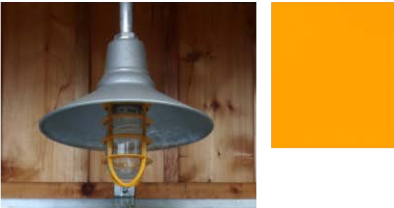
LEGENDS & FOUNDERS
ENTRY DOORS



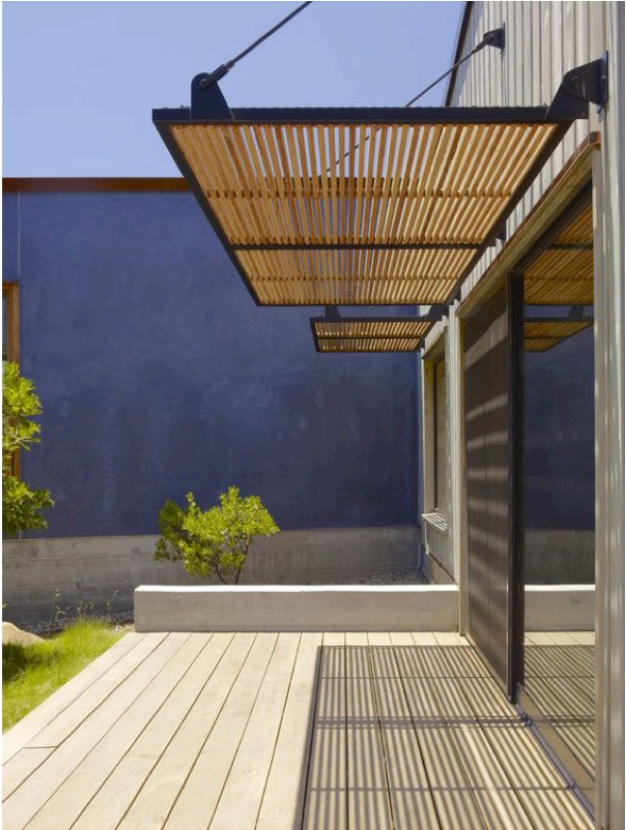
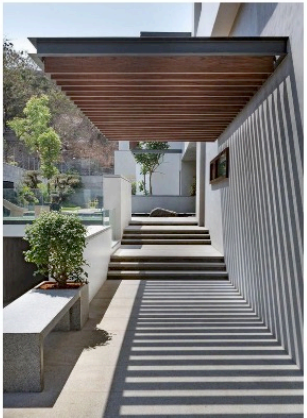
EXTERIOR



PENDANT UNDER EAVES



PATH LIGHTING



Exterior Lighting

Sun Shade Concept at Legends Room

PRIMARY INTERIOR PALETTE



WALLS &
WINDOWS
CONTRAST



STUDIO AT MARIN ART &
GARDEN CENTER



FLOOR



CEILING



WINDOWS
AND
EXTERIOR DOORS



WALLS & TRIM



METAL FINISHES



METAL FINISHES

INTERIOR LIGHTING



INTERIOR DOORS & HARDWARE



SLIDING/ FOLDING EXTERIOR DOORS AT LEGENDS ROOM



SLIDING INTERIOR DOORS AT LEGENDS & FOUNDERS ROOMS



SLIDING/ FOLDING DOORHANDLE AND COLOR



DOORS & FRAMES



DOOR HARDWARE

LEGENDS ROOM



CEILING BEAMS



CEILING



FLOOR



WALLS & TRIM



LIGHT FIXTURES

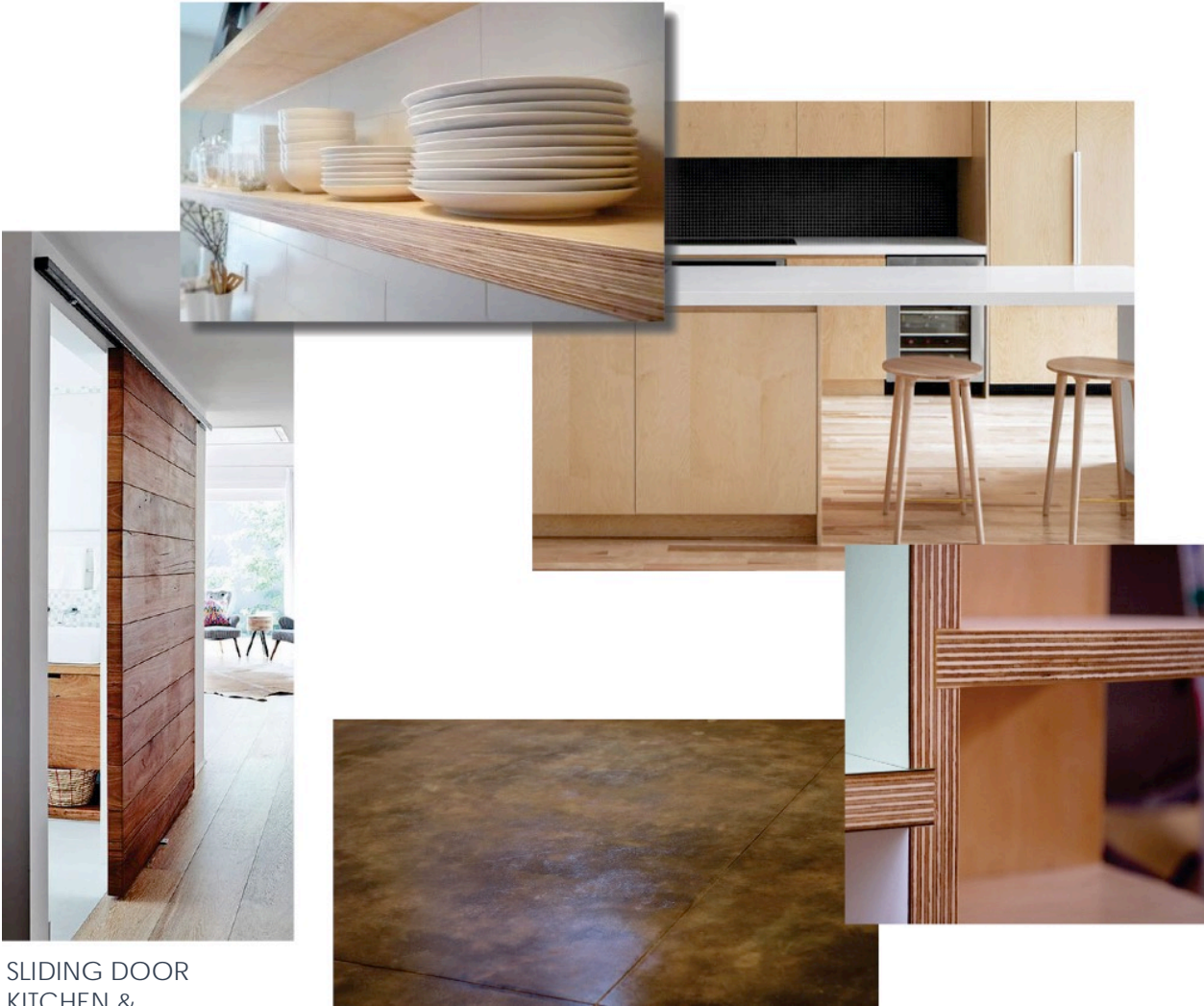


WALL WAISCOT PANELING



EXTERIOR DOORS AND WINDOWS

KITCHEN CONCEPT IMAGES



SLIDING DOOR
KITCHEN &
LEGENDS ROOM

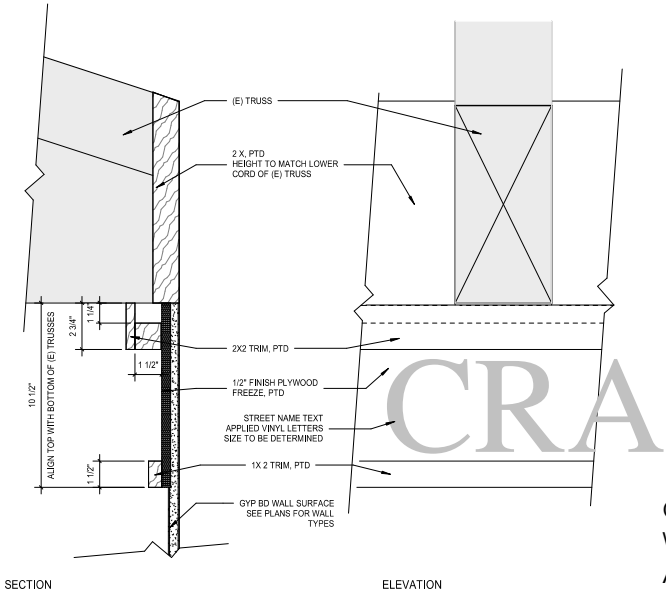
KITCHEN



FOUNDERS ROOM



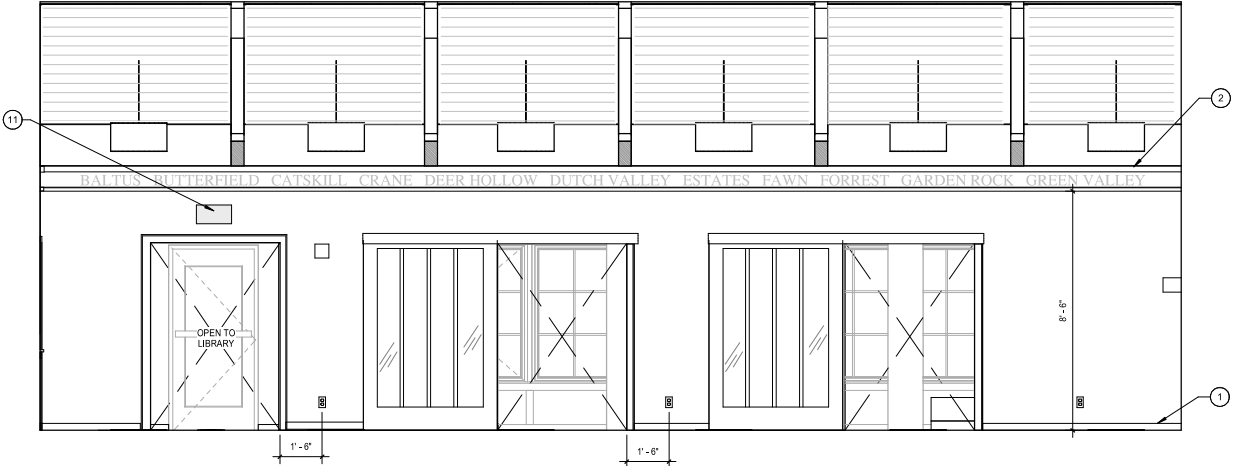
FOUNDERS ROOM



CONCEPT IMAGE - SAN FRANCISCO FERRY BUILDING



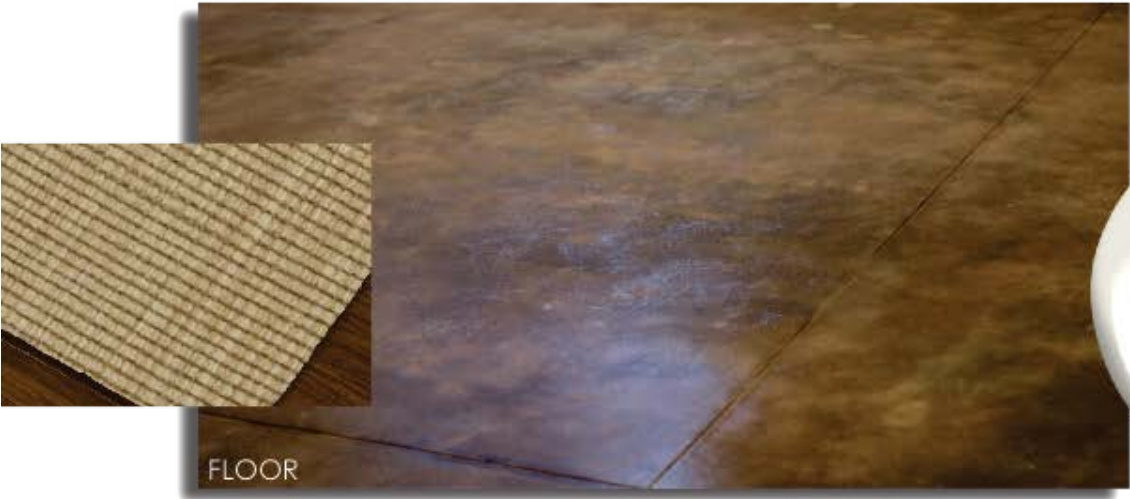
CONSTRUCTION DETAIL OF WALL GRAPHIC - TRIM ALSO ALLOWS FOR HOLIDAY LIGHTING AND DECORATION



LIBRARY / ENCLOSED PORCH



LIGHT FIXTURES



POWDER ROOM



LIGHT FIXTURE



WALL SCENCE



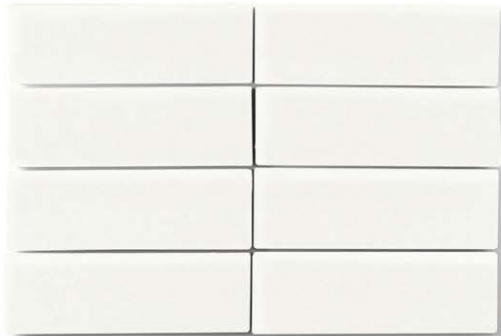
CEILING AND UPPER WALL



TRIM AT TOP OF TILE



DOOR



WALL TILE



FLOOR



WINDOW



QUESTIONS?
CONTACT THE TEAM