

FURNITURE

SLEEPY HOLLOW
COMMUNITY CENTER
RENOVATION



TEAM

VISION & GOALS

FURNITURE LAYOUTS

BUDGET & SELECTION CRITERIA

FURNITURE SELECTIONS



TEAM

Jessica Fairchild

Kai Broms

Gina Singleton

Lauren Thornhill

Sarah Wolf

VISION & GOALS

Furniture for the Community Center is planned to be all new.

The Library, Founders Room, Legends Room and outdoor seating areas can be thought of as hospitality environments like those found in a hotel, restaurant or conference center.

As with the building renovation program, criteria for furniture selection includes:

- Meeting requirements for fire safety
- Meeting and exceeding requirements for accessibility: promote universal design for a wide range of age groups
- Selection for "kid-friendliness"
- Selection for durability and ease of maintenance
- Selection for portability and weight
- Selection for wellness of by focusing on products that do not off-gas harmful chemicals
- Selection for environmental stewardship by focusing on wood products that use responsibly-harvested materials and, if possible, locally made
- Selection for best value

PROJECT VISION & GOALS

Flame Spread & Smoke

California leads the country in its safety codes related to fire and smoke. In general, furniture sold for use in California homes and commercial projects must meet at a minimum California Technical Bulletin 117 (T.B. 117). It is highly likely that any furniture item considered for use will meet this standard but is best to check.

Disabled Access / Universal Design

All commercial projects must meet the California's disabled access code and the federal law known as the Americans with Disabilities Act (ADA). The requirements of both related to furniture focus primarily on table heights and clearances. The requirements get a little involved. We can consider providing specific furniture to meet the requirements, like Starbucks does, as an example. Jessica Fairchild, the project Architect, will assist in determining how compliance will be achieved.

Strong consideration should also be given to furniture that meets the needs of multiple age groups – particularly the elderly, who make up a significant part of the Hollow's demographics. Seat height, arm height and depth of "sit" in a cushioned chair are all considerations of universal design.

"Kid Friendliness"

Selection for safety of young children. No spaces are off limits to kids and the furniture should be selected with this in mind.

Durability & Ease of Maintenance

The community center is anticipated to operate up to seven days per week and be open for several hours per day. Furniture should be selected so that it holds up to near continuous use. Selection of contract grade furniture is encouraged.

The community center will have regular cleaning by a cleaning company or be cleaned by community volunteers. Finish materials and upholsteries should ideally be easily cleanable on site and easily also easily repairable by someone skilled at doing it. Outdoor furniture should be selected to meet the requirements of our Northern California climate.

Portability and Weight

The Community Center will continue to be adaptable to different settings and purposes. Suggested furniture layouts showing some of these settings are provided in the following section. The furniture's weight, how difficult it is to move it and how it is stacked and stored are all considerations that should be made in the selection of the pieces.

Some outdoor furniture pieces lend themselves to being fixed to the ground, while others should allow for ease of movement and re-organization to suit different needs.

PROJECT VISION & GOALS

Wellness

Ideally, furniture selected meets the requirements of the GreenGuard Certification Program, which establishes test methods and emission limits for volatile organic compounds (VOC's). This is often called "off gassing". More information can be found at <https://www.ul.com/resources/ul-green-guard-certification-program>

At a minimum, all furniture should meet the California Air Resource Board's prohibition on products containing formaldehyde in coatings, finishes and adhesives. When possible, solid wood or steel frames should be used in lieu of particle board products to help avoid off-gassing.

Responsible Sourcing

In order to avoid buying furniture made with wood that could come from legally protected preserves or harvested using practices harmful to the environment, we should strongly consider buying products that use Forest Stewardship Council (FSC) certified wood. FSC certification ensures that wood products come from responsibly-managed forests that provide environmental, social and economic benefits. FSC certification requires a chain of custody for the material from the forest through the supply chain.

Products carrying FSC certification are readily available. For example, Pottery Barn, Crate & Barrell and Williams Sonoma all carry products using responsibly-sourced products.

Several other responsible sourcing organizations and certifications are used by manufacturers in support of Fair Trade, natural fibers usage and other criteria and consideration of them is also encouraged.

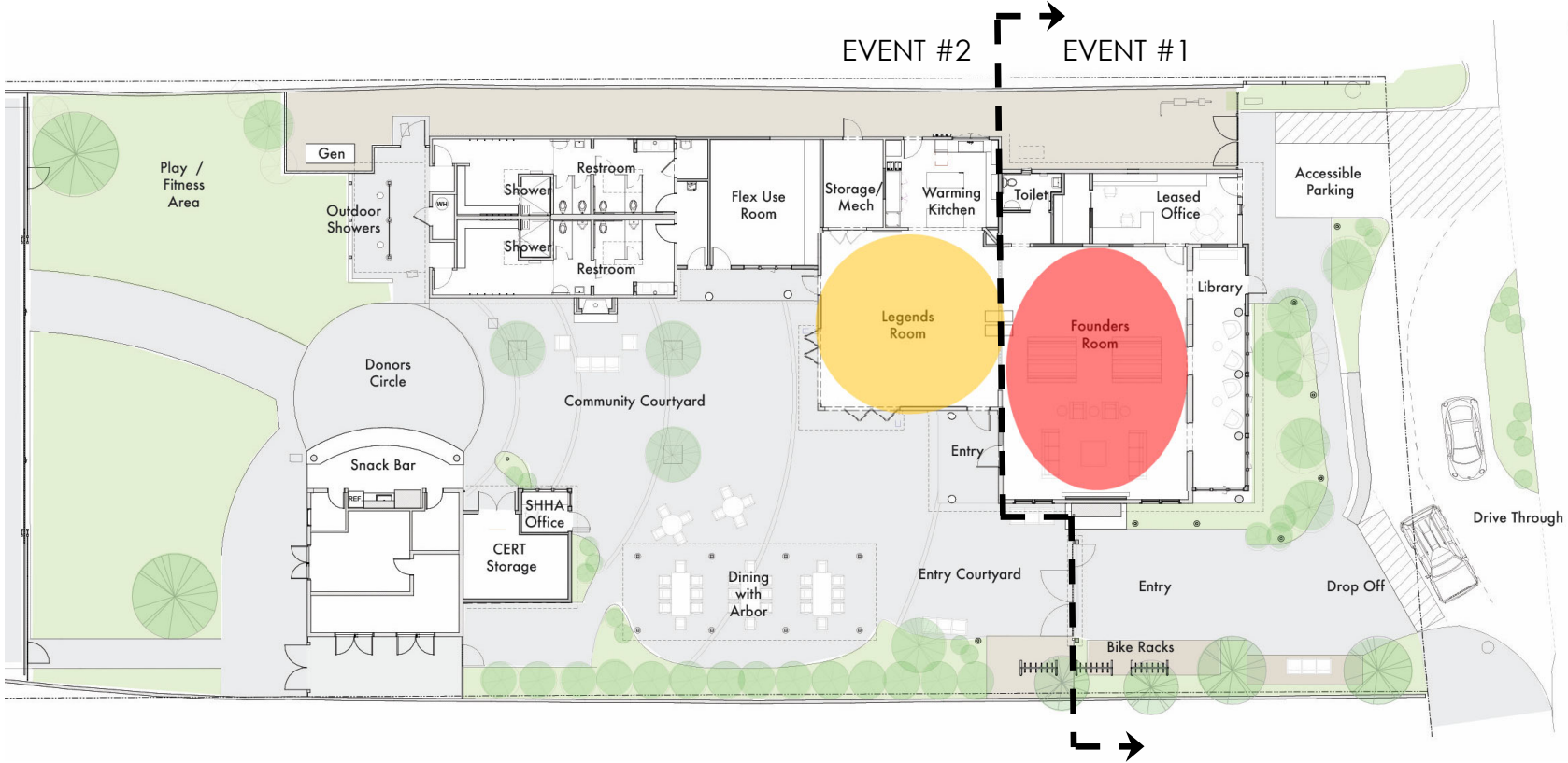
If at all possible and when practical to meet our needs, we recommend selecting furniture made in Marin or the Bay Area as a way of supporting our local economy.

Best Value

The furniture selected for the project can and should provide the community with years of service, however because furniture is considered fashion and is stylized for the time in which it is made, it can often become dated looking. A balance of long-serving pieces and "fashion" pieces that can easily and cost-effectively be replaced is encouraged to allow the community center to continue to adapt and change over time.

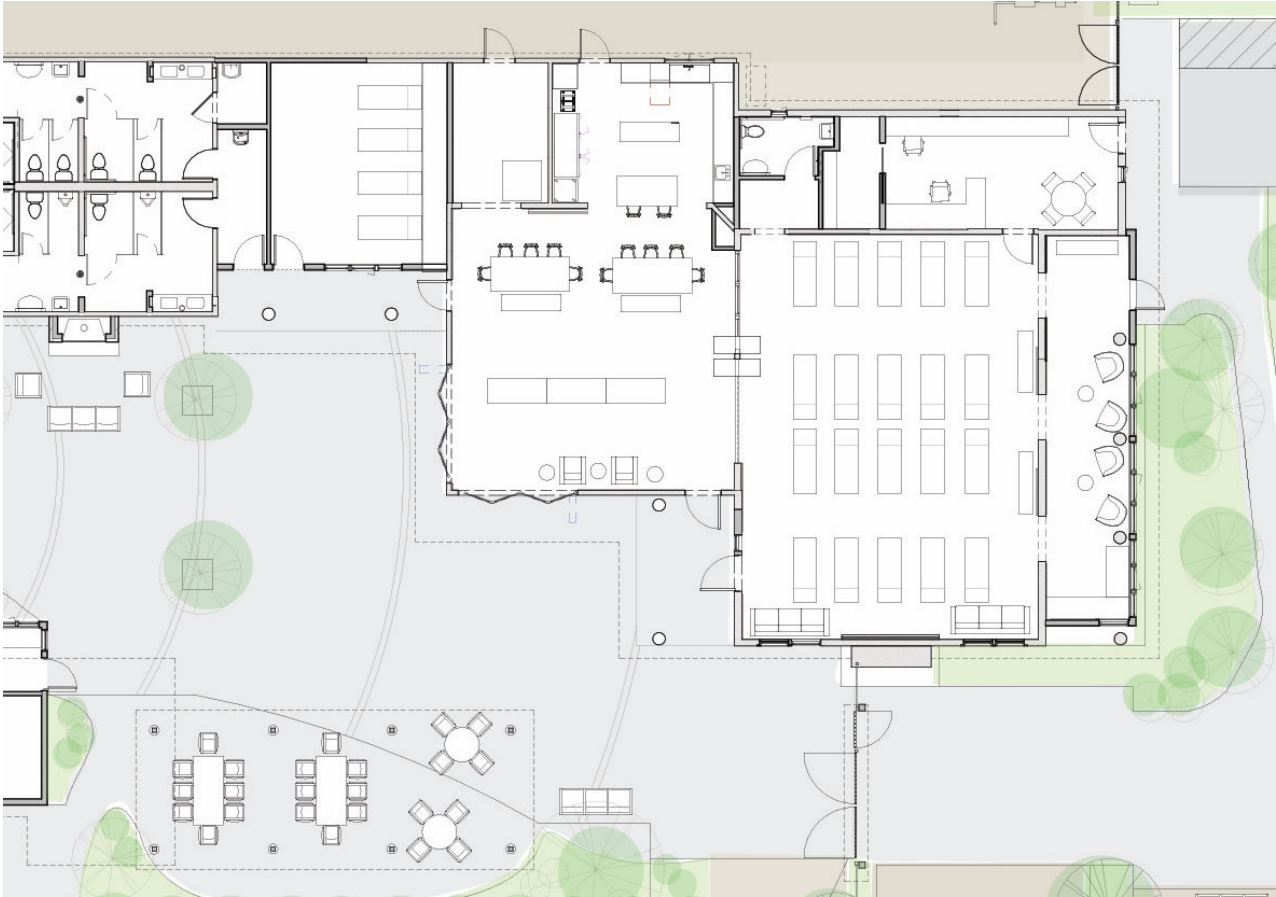
FURNITURE LAYOUTS, ROOM USES & FINISHES

ADAPTABLE USES



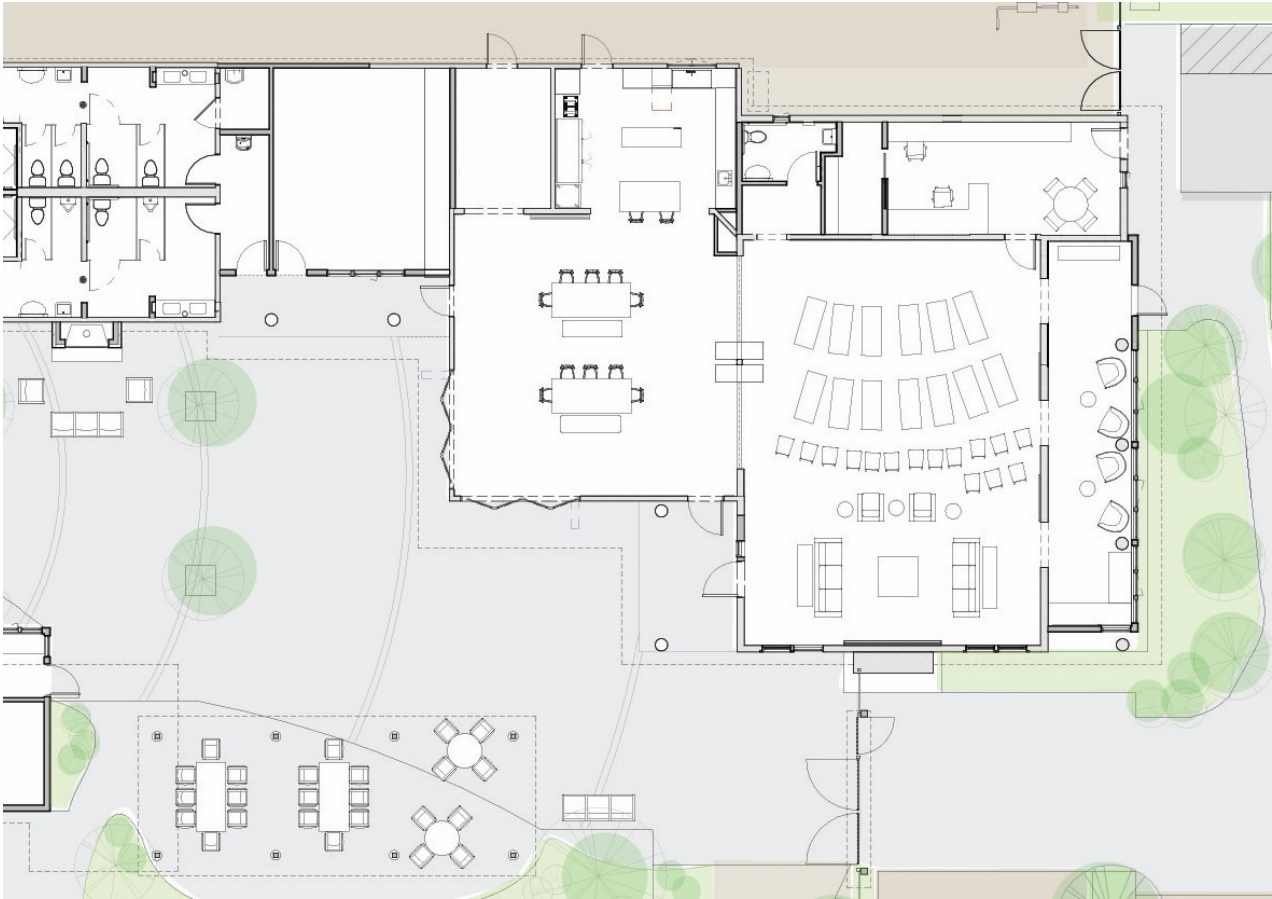
ADAPTABLE USES

Emergency Shelter



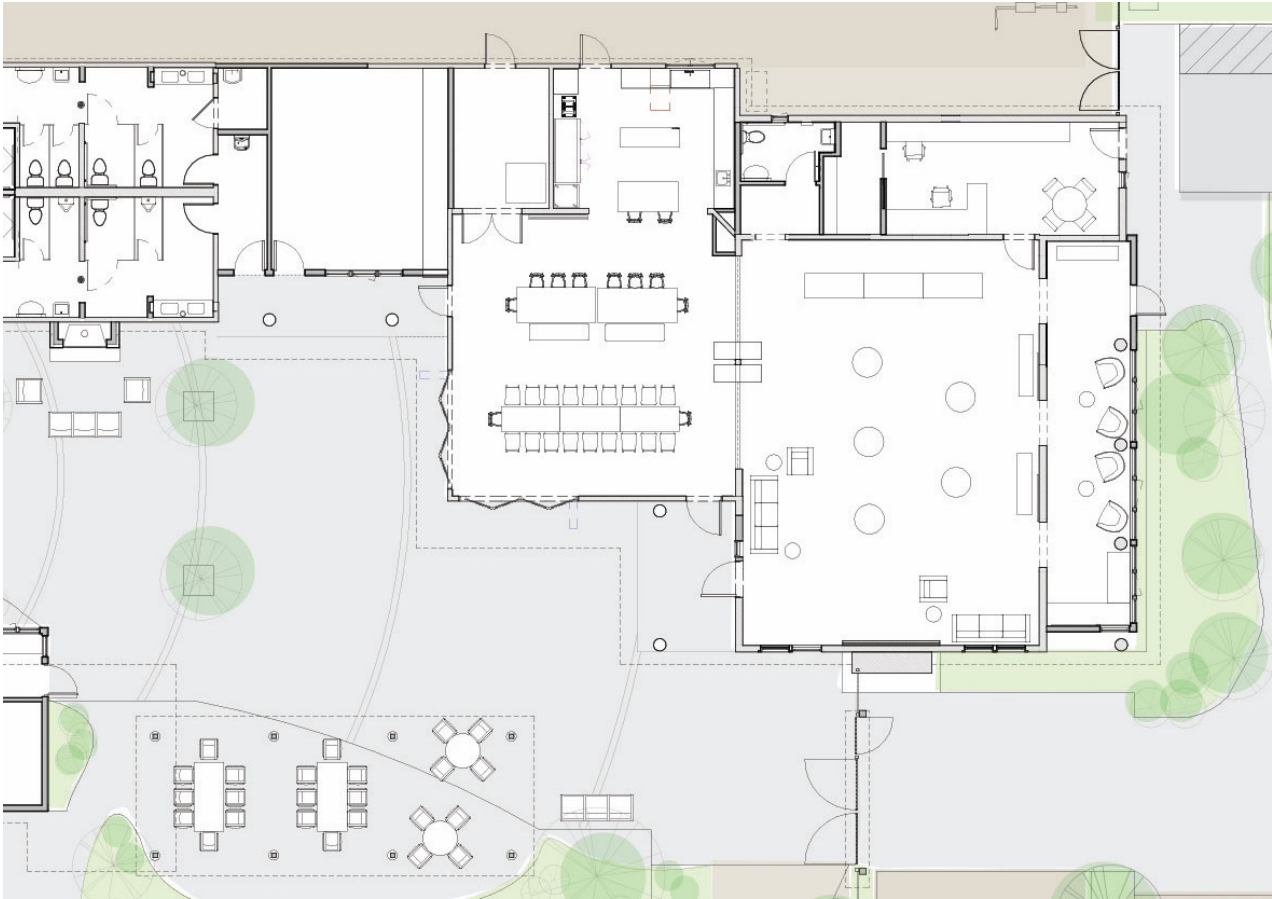
ADAPTABLE USES

Movie Night



ADAPTABLE USES

Holiday Party



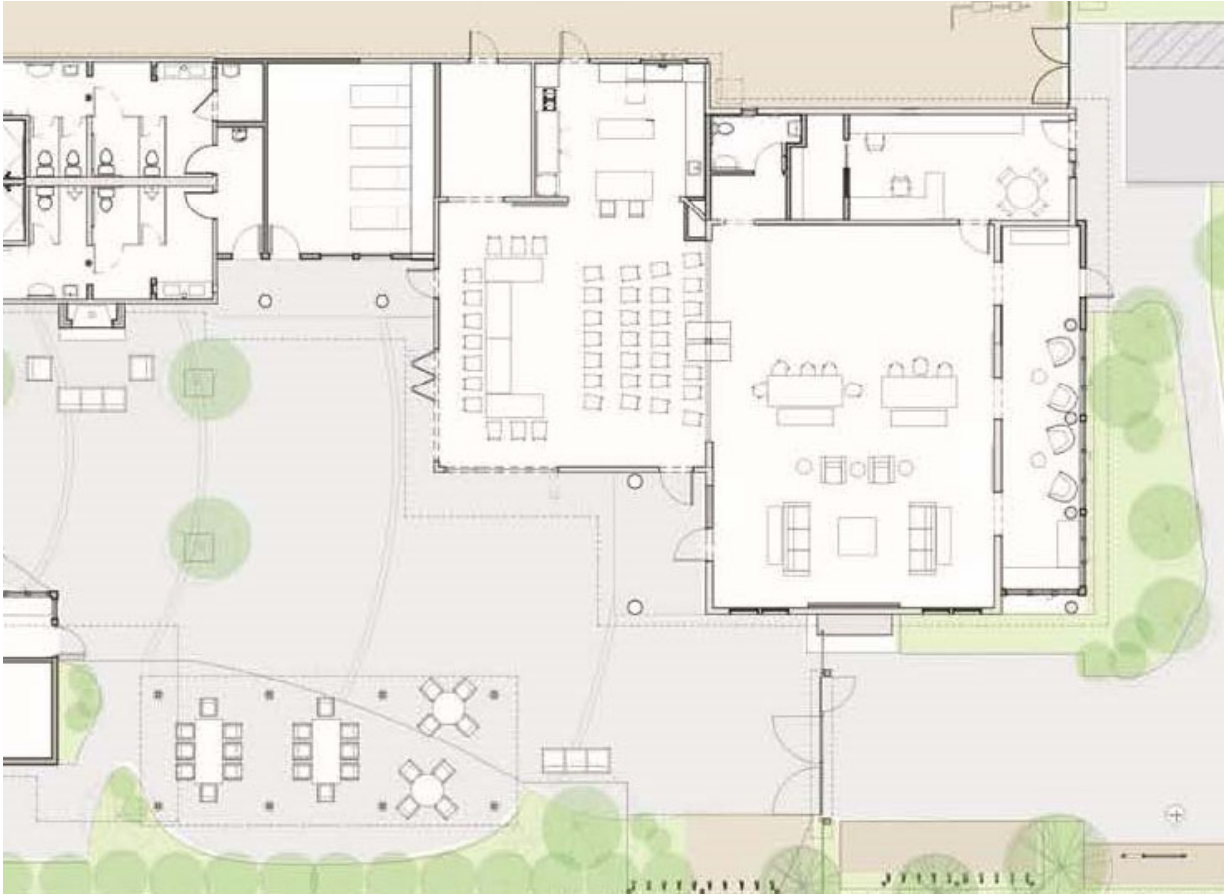
ADAPTABLE USES

Educational Lecture

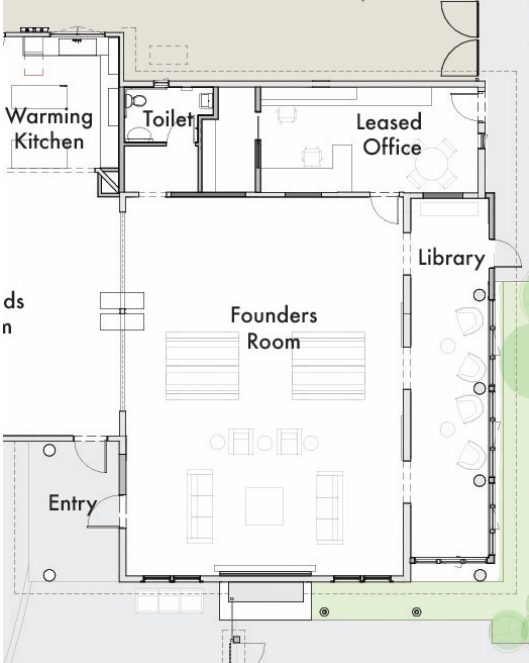


ADAPTABLE USES

Board Meeting / Seminar

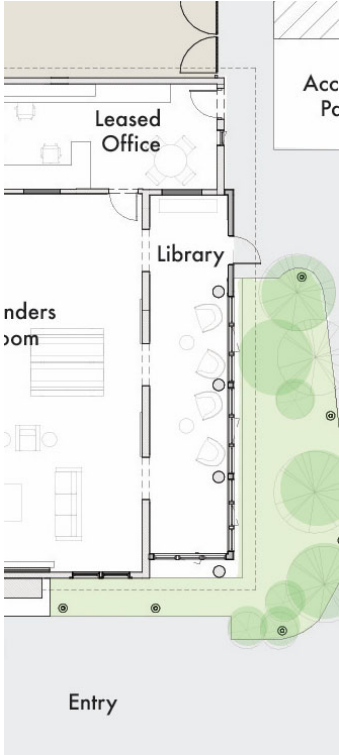


FOUNDERS ROOM USES



FURNISHED FOR FLEXIBLE USE

LIBRARY / ENCLOSED PORCH USES



FURNISHED AND LIT - A WELCOMING BECON FOR THE COMMUNITY

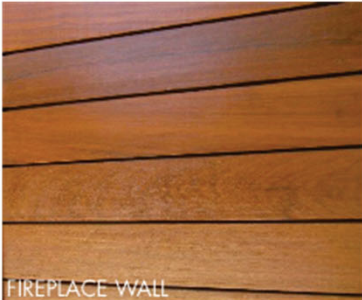


VIEW FROM LEGENDS ROOM TO FOUNDERS ROOM



© Fairchild Broms Design Artist Conception - details subject to change in final construction

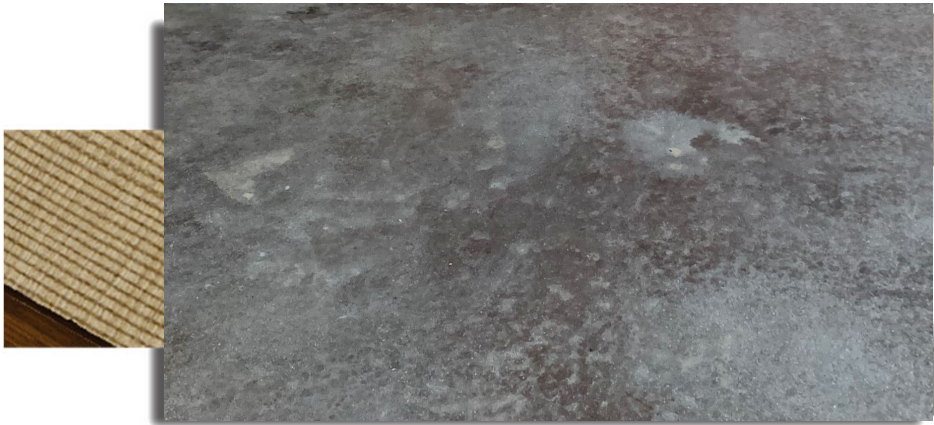
FOUNDERS ROOM



LIBRARY / ENCLOSED PORCH



LIGHT FIXTURES



SELECTED MANUFACTURERS



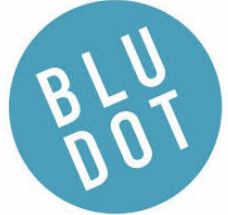
Why GUS* Modern?

- Contract-rated
- North American made
- Sustainable Furnishings Council Member
- All products stocked
- Contract Pricing Available 30-40% off List



Why Room & Board?

- Contract-rated
- American made
- Sustainable Furnishings Council Member
- Most items stocked
- White-glove delivery
- Flat-rate \$79 delivery for as many pieces that can fit in a truck



Why Blu Dot?

- Contract-rated
- American-based
- Aligned with Steelcase, Inc. for marketing and sustainability initiatives
- In-stock
- Trade Discount



Why Design Within Reach?

- Contract-rated
- American-based, Herman Miller-owned
- Fair trade, sustainability policies
- In-stock
- Trade Discount

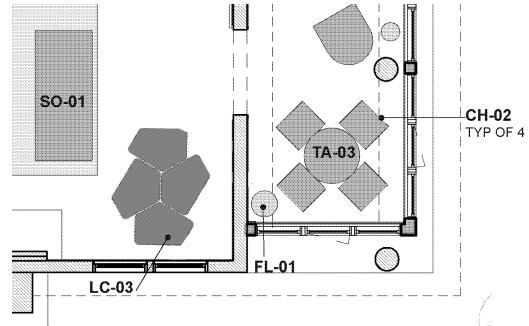
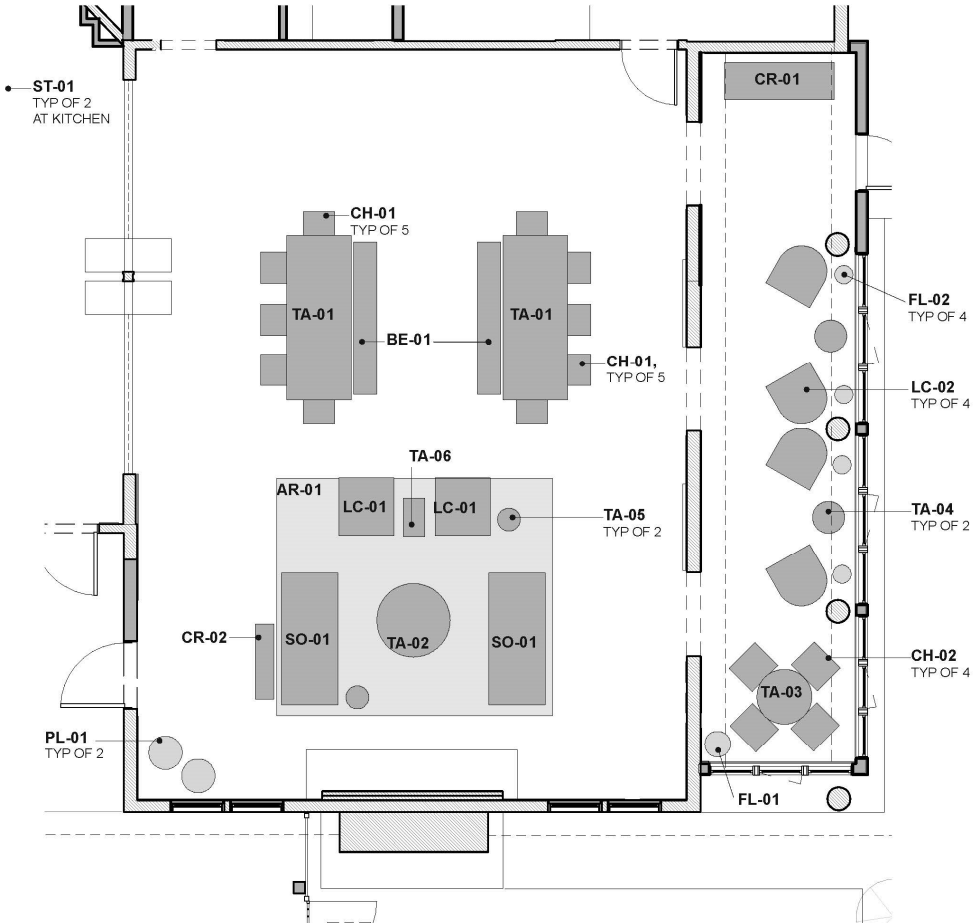


Why EQ3?

- Canadian-made
- Canadian-based, aligned with Herman Miller
- All products stocked

FURNITURE SELECTIONS

FOUNDERS ROOM & LIBRARY PLAN



FUTURE KIDS' AREA FURNITURE

FOUNDERS ROOM SOFA GROUPING



SO-01 Embassy – Gus Modern

\$3,495 – 8 Weeks
 Poly-wrapped polyurethane foam, aniline-dyed leather, walnut stained wood
 84" x 37" x 30"h, SH: 18", AH: 24"



LC-01 Field – Blu Dot

\$2,000 – In Stock
 Fabric, reversible seat & back cushions with high density foam and feather down wrap, painted steel base
 36" x 38" x 36"h, SH: 18", AH: 19"



TA-06 Mag Table

– Design Within Reach
 \$251 – 8 weeks
 Molded walnut plywood
 25.2" x 13.78"D x 16.14"h



TA-02 Circula – Blu Dot

\$1,300 – In Stock
 Powder-coated aluminum
 48" dia x 13" h

TA-05 Don't Leave Me

– Design Within Reach
 \$175 – In Stock
 Black powder-coated steel base
 15" x 15" x 22 3/4"h



CR-02 Trivia

Console EQ3
 \$400 – In Stock
 Powder-coated steel top, solid walnut base;
 49" x 12" x 30" h

FOUNDERS ROOM SOFA GROUPING



SO-01 Embassy



LC-01 Field

FOUNDERS ROOM SOFA GROUPING

CR-02 Trivia Console



TA-02 Circula



TA-05 Don't Leave Me



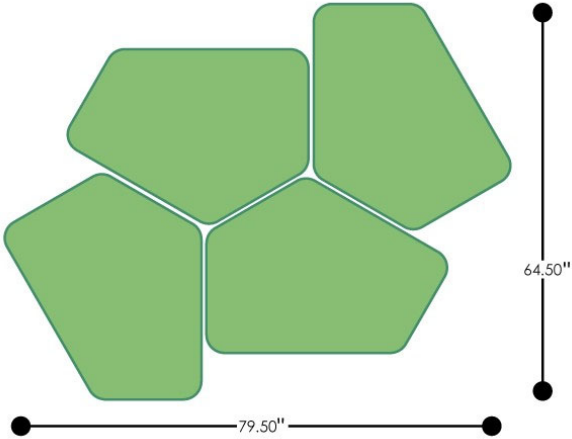
TA-06 Mag Table



FOUNDERS ROOM KIDS' AREA – FUTURE PURCHASE



LC-03 Shapes Series II – School Outfitters
\$1,720 – TBD
Vinyl and fabric (Fern Smooth/Grey Crosshatch
12" h, 18" h



FOUNDERS ROOM TABLE GROUPING



TA-01 Parsons Maple – Room & Board
 \$3,180 – June
 Solid walnut butcherblock top with lacquered finish, recycled natural steel base
 108" x 42" x 30"h
 ADA Compliant



BE-01 Corbett – Room & Board
 \$1,300 – In Stock
 Solid maple with charcoal stain
 100" x 15" x 18" h



CH-01 Spark
 Knoll/DWR
 \$210 – 4 Weeks
 Stackable 6 high
 Integrally-colored Polypropylene
 20.47" x 22" x 31"h, SH: 18"

FOUNDERS ROOM TABLE GROUPING



TA-01 Parsons Walnut Butcherblock



BE-01 Corbett



CH-01 Spark

LIBRARY



LC-02 Ford Swivel – Room & Board

\$2,000 – In Stock

Hardwood frame, fiber-wrapped foam loose seat, top-grain, full-aniline leather
33" x 35" x 30"h, SH: 17", AH: 23"

FL-02- Koleman

Lumens/Robert

Abbey

\$375 – In Stock

14 1/2" x 35 3/4" h

Polished nickel



TA-04 Pi Small – Blu Dot

\$300 – In Stock

Powder coated steel top, solid

walnut base

21" Dia. x 16"h



FL-01- Crane – Room & Board

\$580 – In Stock

16 3/4" dia. x 59 1/4"h

White linen shade, stainless or black



TA-03 Decker – Room & Board

\$1,500 – 4 weeks

36" dia. x 29"h

White quartz composite top, powder coated

recycled steel base

ADA Compliant



CH-02 Host Dining – Blu Dot

\$600 – In Stock

Upholstery over molded foam, wood and metal frame, solid walnut base
24" x 21" x 30" x 17" SH

LIBRARY



LC-02 Ford Swivel – Room & Board
\$2,000 – In Stock
Hardwood frame, fiber-wrapped foam
loose seat, top-grain, full-aniline leather
33" x 35" x 30"h, SH: 17", AH: 23"

FL-02- Koleman
Lumens/Robert
Abbey
\$375 – In Stock
14 1/2" x 35 3/4" h
Polished nickel



TA-06 Pi Small – Blu Dot
\$300 – In Stock
Powder coated steel top, solid
walnut base
21" Dia. x 16"h



CR-01 Copenhagen – Room & Board
\$1,800 – 15 Weeks
73" x 18" x 30" h
Specify glass top

LIBRARY



LC-02 Ford Swivel



TA-04 Pi Small

LIBRARY



CH-02 Host Dining



TA-03 Decker

LEGENDS ROOM / KITCHEN



ST-01 Ready Stacking Counter Stool – Blu Dot

\$200 – In Stock

Powder coated steel frame, painted plywood seat

20" x 19" x 25"h



QUESTIONS?
Contact the
Team