



Sleepy Hollow Bulletin

The President's Letter July/August



President - Pete Mayer
shhapresident@gmail.com

Vice President - Gina Singleton

Membership - Hayley Mullen
shhawebsite@gmail.com

Bulletin Editor - Norma Novy:
normanovy@comcast.net,
415-499-9409



Tennis Club

Chris Staskus: www.sleep
hollowtennis.org



Swim Team

Anne-Marie Kostecki
presidentsht@gmail.com



Sleepy Hollow Social Club

shhaevents@gmail.com

Community Scheduling Manager -

Aya Andrews, 650.814.3013

Marin County Supervisor

Katie Rice: 415-473-7825

krice@marincounty.org

Marin County Sheriff: 415-479-2311

(9-1-1 if crime in progress)

California Highway Patrol:

415-924-1100

CHPMarin@chp.ca.gov

trafficconcern@centralmarinpolice.org

www.shha.org



Volunteers donate their time to make this 4th of July one of the best. L to rt, Pete Mayer, Scotty and Jeff Lo, Pat Wingfield, and Kyle Gertridge.

Dear Sleepy Hollow Community Members,

It has been a while since my last letter — the 4th of July preview being somewhat pro forma - and there is much to revisit, much to look forward to, and much to celebrate! First, thank you to everyone who came out and especially to everyone who volunteered their time to make the 4th of July celebration one of the best in recent memory. The food service went smoothly, thanks to the stewardship of Joe Gozzi (with a guest appearance by his dad), bands PB & Jam and Stonefish laid down what many are calling the sounds of the summer, and Henhouse Brewing Company came through with a generous donation of two kegs of high-end and high-test beers. There are too many volunteers to list but their contribution cannot be overstated- as I often say in this space, nothing happens without community support and involvement!

Not content to rest on their laurels, the Sleepy Hollow Social Committee has been hard at work coming up with some great events for the late summer and fall. Look forward to a Back to School Social on Saturday the 20th, a 49ers season kickoff viewing party on September 11, the Second Annual Cornhole Tournament coupled with an End of Summer Social, an Oktoberfest celebration, a pumpkin carving event, and a kids' movie night/parents' night out in November. We hugely appreciate your continued support of the Sleepy Hollow Homes Association and these events are our way of saying thank you and to deliver value for your membership dollars outside of pool time. Robust membership numbers enable us not just to hold more and better events but also make improvements to the Community Center, both large (hiring a dedicated overseer for the Community Center), medium (new lounge chairs on the pool deck!), and even unseen (long-delayed maintenance to the pool filter system).

Finally, I would be remiss not to mention the

results of the Deputy Zoning Administrator hearing that took place last Thursday, August 4. As you are all aware, Sleepy Hollow sits in a bit of a dead zone for wireless telecommunications, with a few pockets getting signal from the White Hill facility but otherwise very little connectivity. This is not without positive aspects — it is nice to go on a walk or run or to hang out with the kids down at Hidden Valley unshackled from the constant buzzing in your pocket reminding you that there are quote-unquote more important things deserving of your attention. That said, there are times — PGE public safety power shutoffs chief among them — when it may be critical to make or receive a call, whether due to wildfire danger or medical emergency.

To that end, it has long been the position of the SHHA and the San Domenico School that Sleepy Hollow needs improved wireless telecom and on August 4 that effort took a huge step forward with the approval of a cell tower installation on the San Domenico Campus. I cannot thank those of you — I know of about 100, so I'm sure there are more — who wrote in to the County planner in support of the project and the 35 or so residents who attended the hearing to voice your support. The motion to approve the project was approved, a result which my Verizon contact told me is "unheard of in Marin County." The SHHA is not a party to the Verizon-San Domenico agreement and has no influence over the installation site, but our community was absolutely the driving force in getting the project approved and we should view this as an example of the things we can accomplish when we do things together. Now, does anyone have a C-suite contact at Verizon we can call to get this thing built?

Yours in community,

Pete Mayer, SHHA President



The Andrews and Hutchings families have the best fun on 4th of July!



News & Notes from Supervisor Katie Rice

EPSS (Fast Trip) Power-Outages

Beginning last year, PG&E began equipping its distribution lines with a highly sensitive technology designed to prevent fire ignitions caused by objects hitting its distribution lines. Called Enhanced Powerline Safety Settings (EPSS) or “Fast Trip,” power lines are de-energized when the system detects a line strike (by branch, bird, animal) and the affected circuit is automatically de-energized. PG&E has now installed EPSS on distribution lines in high fire danger areas throughout PG&E’s service territory, of which much of Marin is included. PG&E activated the EPSS system in May, with the intention to keep it on through the “fire season.”

Since activated, “Fast Trip” has resulted in frequent power outages for much of Sleepy Hollow and over the hill into Fairfax. Distribution lines serving our area were “tripped” three times over the course of 10 days in late May/early June causing outages lasting anywhere from 60 minutes to six-plus hours. And there have been multiple shorter outages in the weeks since, the most recent occurring Wednesday, August 10th.

While the objective of Fast Trip makes sense (to prevent ignition caused by line strikes), the reality of how Fast Trip is playing out in our community is unacceptable. In communities such as Sleepy Hollow, where for most cell service is spotty or non-existent, power outages not only cause disruption, but we also lose all telecommunications unless we have our own back-up power source.

EPSS is a very different ignition/wildfire prevention tool than PSPS (Public Safety Power Shut offs) of which we are all very familiar. PSPS outages are planned, days at most in duration, publicly noticed power-shutoffs utilized during high-fire danger weather conditions. The EPSS program as currently deployed is on for the duration of “fire season” (May to November). If a line

strike triggers an outage, there is no advance notice, and once the affected circuit is de-energized, PG&E will not turn the power back on until the affected lines have been inspected. Importantly, unlike PSPS, PG&E has deployed Fast Trip without any oversight by its regulatory body, the California Public Utilities Commission (CPUC). As a result, there are virtually no specific parameters for how PG&E uses “Fast Trip” as a wildfire prevention tool, nor assessment of how well it is working when deployed, and whether or not it creates other public safety risks.

Since learning of this new highly sensitive Fast Trip/EPSS program, I have been working with Marin County Office of Emergency Services, Senator McGuire, and Supervisors from other counties to insist PG&E examine the effectiveness, appropriateness, and impacts of EPSS of this program. I have met with PG&E officials at the local and state level, testified at the CPUC, and had Marin County officially join other public agencies in formally requesting that the CPUC assume oversight and regulate PG&E’s use of EPSS.

PG&E is a behemoth, and the CPUC a state agency, encumbered by process and politics making it slow to move, let alone act. That said, EPSS is on the CPUC’s radar. As with resident support of the approval of a Verizon cell tower at San Domenico, it will be important for residents to weigh in on the use of Fast Trip, to stay involved and informed. I encourage residents to share your experience with power outages here in the Hollow, your questions and concerns regarding EPSS “Fast Trip” program by filing an informal complaint at PG&E/CPUC at <https://www.cpuc.ca.gov/consumer-support/file-a-complaint/utility-complaint> then email my Aide, Crystal Martinez, cmartinez@marincounty.org and let her know you sent. You can also send your comments/concerns to Crystal, and she will track and forward on your behalf.

Safety Improvements in the Works for the Butterfield Corridor!

Many of us travel down Butterfield several times a day and week and are concerned about safety for bikers and pedestrians of all ages. The Butterfield Safety Committee, a subcommittee of Butterfield Corridor Safe Streets, has been hard at work identifying the communities concerns and coming up with improvements to address. This collaborative group includes representatives from the Sleepy Hollow Homes Association, the San Anselmo and County of Marin Department of Public Works, schools, Safe Routes, the Marin County Bicycle Coalition and interested residents. Improvements are planned for both the San Anselmo portion as well as unincorporated portion.

The Town of San Anselmo (in partnership with the safety committee) has been working



Butterfield bike lane improvements in San Anselmo

on a comprehensive safety campaign on the southern side of Butterfield, including pavement patching in the bike lane, a slurry seal over the whole stretch of Butterfield Road from Sir Francis Drake Boulevard to the County Limit, wider bike lanes, additional speed limits signs, and targeted green bike lane markings at intersections. The Town will also be installing a Rectangular Rapid Flashing Beacon (RRFB) at the crosswalk at Woodside Drive, and a radar speed feedback sign near the fire station. The improvements should help reduce vehicle speeds and increase awareness of bicyclists and pedestrians throughout this busy corridor. Funding for these improvements comes from Local Sales Tax Measure D.

The County of Marin (in partnership with the safety committee) has been working on concepts for a crosswalk across Butterfield Road at the intersection of Irving Drive (at the community center) and an extension of the bike lane on Butterfield Road, from where it currently ends at the San Anselmo town limit to the intersection with Sleepy Hollow Drive. At this time, the bike lanes will not be extended to the end of Butterfield Road because of concerns about parking during large public events at the Sleepy Hollow Club House and pool. Both proposed improvements will be headed to the Marin County Board of Supervisors on <https://connect.xfinity.com/appsuite/api/image/mail/picture?folder=default0%2FTrash&id=1909763&uid=image0.jpeg&scaleType=contain&width=1024> August 23 for approval.

The community center crosswalk will require a limited redesign of the intersection to provide an ADA-compliant path of travel. This intersection redesign will include installation of curb, gutter and sidewalk including a curb ramp on the easterly corner of the intersection. A crosswalk will connect to an ADA-compliant path on the westerly side of Butterfield Road that will lead to the Community Center. A redesign of the median island on Irving Drive may be necessary as well. Funding will need to be secured.

To establish the paved shoulders as a painted bike lane will require installation of bike stencils, restriping the 5-foot-wide bike lane with a white stripe to highlight the separation of motorized vehicles from bike traffic and a white stripe to indicate the area that shall be kept clear of parked vehicles. In addition, green road paint will be installed to highlight the end of the bike lane near Sleepy Hollow Drive. Signs reading "No parking, bike lane" will be installed at approximately

MMWD: Searching For More Water

Jack Gibson, MMWD Board Member, August 9, 2022

I am optimistic as the water district's search for additional water continues. The "no stones left unturned" approach taken by the district and our contractors, Jacobs Engineering, is looking at all potential alternatives for increasing our water supply. The review is not just looking for emergency supply for drought conditions, but it is also a search intending to increase our everyday water supply as well. The examination is looking for long term protection against future drought, and for more immediate ways to increase our available water supply.



With new pumping and pipeline infrastructure we have already this year increased our current supply by 5,000 acre feet of water from the Russian River - equivalent in quantity to a new Bon Tempe Reservoir. I am hopeful that in cooperation with the other North Bay water districts, greater integration of our respective water systems and infrastructure, we can improve the entire water supply portfolio for the benefit of all of Marin and the entire North Bay. The Russian River is the second largest river in northern California. The river is supported by a 1,485 sq. mi watershed, with an annual average discharge of over 1,600,000 acre feet of water. That annual flow rate represents an enormous difference in the volume of Russian River summer flow verses the winter flow.

Marin Water, in collaboration with Sonoma Water, is exploring the concept of "Winter Water" as water source to benefit the entire region. The term "Winter Water" refers to Russian River water that is above the minimum in stream flow requirements resulting from rainfall in the months of October and May. Even in the record dry years of 2013 and 2020 there was considerable volume of winter water flow in the river.

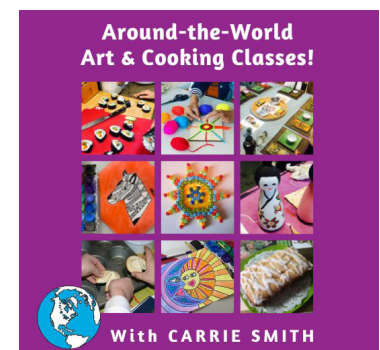
Successfully using Russian River Winter Water to meet the water needs of the region would require well planned use of our current storage capacity at Soulajule and Nicasio reservoirs, construction of additional pipelines to connect the incoming Russian River Water to those reservoirs and to Kent reservoir. Or, on an even grander scale, the connection could be to a newly constructed reservoir not associated with any creek, but to serve as a storage facility only for the benefit of the region. Since that new reservoir would be a joint effort between all of the water districts, the physical placement of the storage could be situated in the best location based on physical requirements, cost and efficiency - not based simply on political jurisdiction. This would be a reservoir jointly paid for and managed by all the regions water districts.

200-foot intervals along both sides of the road. Parking will still be available off-pavement as space permits.

The Butterfield Safety Committee conducted public outreach to gain community feedback. An online poll was conducted between January 17, 2022, and February 7, 2022, and an online public meeting was held on April 21. Both the survey and community meeting indicated strong support from residents.

To learn more, visit the Butterfield Safe Streets webpage at www.shha.org (under Safety tab), and review the County of Marin staff report for the 8/23 meeting (to be posted on 8/18) at <https://www.marincounty.org/depts/bs/meeting-archive>.

Here's to a safer Butterfield Road!



Around the World Art & Cooking Classes coming this Fall

Sleepy Hollow's Rich & Varied History

The San Anselmo Historical Museum celebrates the beautiful valley of Sleepy Hollow in a new exhibit, "Sleepy Hollow's Rich & Varied History." The exhibit covers the history from the early days when cows grazed the open grasslands, the opening of a popular but short-lived golf course, the U.S. Army's arrival during WWII, and the development of the residential tract for single family living with schools and a community center. A varied history indeed!

The exhibit features vintage photographs and items from the Historical Museum's collection and other items loaned by Sleepy Hollow resident Bob La Belle. Thanks go to Bob for his contributions from his personal collection and that of his mother, Audre La Belle, who for many years was the Sleepy Hollow historian. The La Belle family's dedication to preserving and documenting Sleepy Hollow's history is much appreciated.

The Sleepy Hollow Dairy shows cows grazing on open grassland around 1910.

The Sleepy Hollow Golf Course opened in 1937. It was an 18-hole course with a Par 2 19th hole and was advertised as the second longest one in the United States. It ran south along both sides of Butterfield.

Richard Hotaling built an elegant country home at the upper end of the valley in 1900. In the late 1930s, it served as the clubhouse for the Sleepy Hollow Golf Course. The Raisch family purchased the home in 1943; it burned to the ground in 1955. Today, only the steps and ruins of the foundation of the home remain.

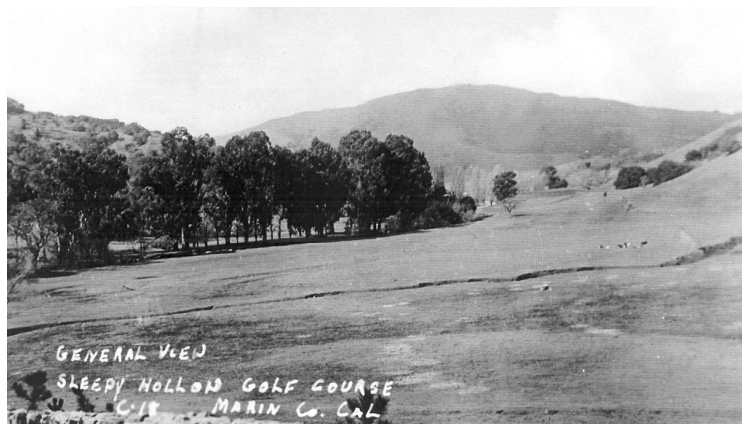
A riding stable opened in 1938 at the old dairy site in Sleepy Hollow. It closed when the U.S. Army occupied the site and then reopened. The stables closed in the early 1970s when Joseph Eichler subdivided and built 15 new homes. Three riders are shown here in 1952.

Sleepy Hollow's Rich & Varied History:

The exhibit can be viewed daily 10 a.m. to 6 p.m. in the hallway outside the Historical Museum on the lower level of the San Anselmo Public Library until the end of October.



The Sleepy Hollow Dairy, ca. 1910, on open grassland.



The Sleepy Hollow Golf Course opened in 1937.



Richard Hotaling built a country home at the end of the valley in 1900.



The Riding Stable, at the old dairy site, 1938 to 1970,

Capital Campaign Check Point July 1, 2022

The Sleepy Hollow Community Center represents the giving and hard work of this community to produce our home to social, recreational, and civic activities reaching over 3,000 people in its first 12 months. From cornhole to cocktails, lap swim to Hip Hop, Sea Lions to Scouts, teen bands to gentle yoga, sculpt to burn, culture crafts to casino night, we are reaching more residents and members of all ages now, and intend to reach more.

This month we celebrate the more than 400 families and individuals who have donated, individually and through events, a combined \$1,568,846 to build this for Sleepy Hollow. Many have given more than once, and are still pledging and giving. The names on these pages are grouped according to their tier of giving through July 1, 2022. When the campaign is complete, donors will be memorialized permanently in the Community Center according to their ultimate tier of giving. Please find your name and consider any additional gifts you can make. Also, let us know of any correction to your name for the permanent recognition, or if you think we have made a mistake. Thank you.

Give or increase your giving now and here is what your gift can accomplish:

- Emergency Supplies Storage Building for use by the Sleepy Hollow Fire Protection District (and with space for a small site office). We have a contractor who will work weekends this winter to complete this by January 31, 2023. This in turn will free up the Flex Room to be a small gym.
- Childrens' Play Area: Planning continues to select an affordable, attractive design that engages ages 2-5 and 5-12 as fully as possible in the space available. Affordability issues and a slow down in gifts in late spring and early summer meant we missed the opportunity to achieve this goal for this summer. Timeline now is to select and install before Memorial Day weekend 2023.
- Acoustic folding partition to create two activity spaces, such as yoga in the Legends Room with work space, casual drop in, or card games, etc. in the Founders Room and Library.
- Other smaller but important things like identity signage, improved fencing, an outdoor fire feature to lengthen the days, small gym/workout space, chimney cap, and more.

To donate for the first time, add to your previous donations, or move up a tier, please visit shha.org/communitycenter or simply select DONATE on the home page, to give or pledge to Sleepy Hollow Charitable Foundation. Or, contact shcfdonations@gmail.com

with questions. Or, mail your check to 1317 Butterfield Road. You can donate stock, wire funds, and give from an IRA as part of a Required Minimum Withdrawal. Sleepy Hollow Charitable Foundation is a chartered 501(c)3 non profit corporation and is eligible for employer matching and gifts from Donor Advised Funds.

The Redwood Tree Tells The Giving Story:

Total giving goal: \$1,815,846

Gifts to date: \$1,568,846

Needed to complete: \$247,000

Phase 2 estimated total cost is \$763,000 (of which \$416,000 has been spent to renovate the locker rooms, install the outdoor shower, and purchase courtyard furniture and lighting). Phase 1 is complete at a cost of \$1,870,00, making the total Master Plan* \$2,643,000.

Total Sources of Master Plan Funding

Donations to date:	\$1,568,846
Future donations	247,000
Private lending (4%):	510,000
Mortgage financing:	775,000
Other loans and grants:	50,000
Total Funds:	\$3,170,846
Total Master Plan* Costs:	\$2,643,000
Spent prior to March 2019*:	527,846

*The Master Plan was developed in spring 2019 when plans for a complete tear down and build of an all new 2-story building were shelved as unaffordable. The Master Plan was adopted in June 2019; planning approval obtained November 2019, Building permit submitted December 2019, amended April 2020, approved September 1, 2020. Phase 1 Construction began September 1, 2020, was substantially complete July 2021, occupancy approved February 1, 2022. Phase 2 Construction began October 2021, locker rooms and outdoor shower substantially completed May, 2022.



MARK YOUR CALENDAR

8/11 and 9/2 SHHA Board Meetings, 7pm at the Community Center

8/20: Back to school Social 5:30-8:30pm. BBQs available for BYO grilling and Sol Food pre-purchase option. Snacks & Drinks for purchase. Pool will be open!

9/9: Fall 2022 Corn Hole Tournament Opening Ceremony and Group Play Games

9/10: Fall 2022 Corn Hole Tournament - Final Rounds

9/11: Fall 2022 Corn Hole Tournament - Final Rounds

9/17: End of Summer Social 4:00-8:30pm. Live Music. Food & Drink for purchase. Pool will be open!

9/24: Community Shrimp Boil hosted by the Boy Scouts

AUGUST GROUP FITNESS CLASSES

Mondays 8:35-9:35 - Body Sculpting & Core Conditioning

Tuesdays 8:35-9:35 - R.I.P.P.E.D. Cardio & Strength

Tuesdays 10:00-11:00 - Gentle Yoga

Thursdays 8:35-9:35 - BURN Cardio & Strength

Fridays 8:35-9:35 - Body Sculpting & Core Conditioning

Sat/Sun 9:00-10:00 - BURN Cardio & Strength

Visit shha.org/fitness for more info on fitness classes.

SLEEPY HOLLOW CHARITABLE FOUNDATION DONOR HONOR ROLL 2013 – JULY 1, 2022

Legacy \$50,000+

Anonymous (2)
Dave and Pat Grubb

Heritage \$20,000 - \$49,999

Luke and Kit Argilla
Franklin and Jan Blackford
Don and Kathleen Briggs
Scott and Celeste Chapman
Scott Henderson and Kari Heiman
Al and Pat Lyle
Peggy and Tom McAllister
Doug Rigg
Mark and Cathy Sarkisian
Sleepy Hollow Fire Protection District
Sleepy Hollow Homes Association
Stephen Simon Charitable Foundation
Anne and George Wagner

Foundation \$10,000 - \$19,999

Erin Badala
Steve and Cathy Easley
Brendan and Mary Kay Finn
Fred and Sandra Fisk
Peter and Carolyn Goodman
Chris and Sydney Higgins
Scott and Peggy Maclise
Roland Minami
Nick and Hayley Mullen
Michael and Sandra Murtagh
Shaun and Jan Scharetg
Sleepy Hollow Sea Lions Swim Team
John T. and Mary Jane Smith
Derek and Lauren Thornhill
Brian Trainor
David Williams
Andrew Witkowski

Cornerstone \$4,500 - \$9,999

Peter and Angie Ackley
Sharon Adams
Spencer and Jenn Adams
Chuck and Kelly Alberton
Mark and Julie Anderson
Matt and Aya Andrews
Dave and Emily Baker
Damon and Maureen Blechen
Gary Boero
Jan and Alison Smith Brennan
Jonathan and Holley Briggs
Mike and Tracy Cassin
Ken Cereghino
Scott and Becca Hintergardt
Erik Christiansen and Nicole Holbrook
d'Alessio Family Fund
Gregg and Nancy Elberg
Sharon and Mike Fahy Family
Paul and Lorraine Ferrarese
Diane Fiddymont
Richard and Sally Fish
Doug and Julie Flake

Linda and Rich Fowler
Jeff and Erica Gates
Elizabeth and Joe Gozzi
John and Koren Grubb
Darlene and John Hanley
Francois and Brigit Hedouin
Eric and Erin Hill
Bradley and Emory Johnson
Jay and Ronnie Kaiser
Linley and Peter Kaye
Mike and Tracy Krilich
Barry and Barbara Lee
Jeff and Mia Ludlow
Pete and Dawn Mayer
Fiona and Dennis McElligott
Ryan and Jill Nail
Rob and Beth Osier
Alison and Danny Peltz
Elizabeth (Loft) and Lawrence Petz
Ellie and Peter Pomeroy
Mark and Nancy Reagan
Justin and Patricia Rick
Eric and Kristina Riemer
Greg and Kristen Rivers
Jim and Cathy Robertson
Doug and Ashley Roosevelt
Adriene Roth
Ali Sadat
Devon and Kip Smith
Zamira and Paul Solari
Matt Sonefeldt
Robert Steiner
Lisa Stockholm
Shaun and Lauren Westfall

Loma Alta \$2,000 - \$4,499

Eli and Laura Adler
Raanan and Rebecca Bar-Cohen
Charles and Vicki Bassing
Roy Bell
Kai Broms and Jessica Fairchild
James Buie
Alan and Suzanne Saunders Burr
Thomas Carey
Torv Carlson and Grace White
Jyll Cassidy and Christian Franklin
Lita Collins and Clay Kuzma
Kevin and Molly Coughlin
Charles and Susan Deardorff
Andrew and Kristen Dickinson
Blake Drager and Rachel Vick
Robert and Rita Dulebohn
Dave and Kristen Ellis
Kevin and Susan Fox
Jen and Alex Gauna
Richard Goldman
Chuck Gould
Llana and Joe Giovara
Ruth Giusto
Dave and Jen Haskell
Ron and Lynn Hinck

Peter Houser
John and Amy Lacy
Jeff and Cristie Lo
Fred Lurman and Cynthis Perlis
Michael Lydon
Nancy Kelleher
Legends Club
Scott Johnson and Carolyn Margiotti
Mark and Ellen McCaffrey
Peter and Janet Miller
Karin and Peter Narodny
Susan and Brian Reed
Rod and Shannon Roche
Nance Rosencranz
Suzanne Saunders-Burr
Jeff Schneider and Martha Crawford
James Seymour
Judd and Erin Sher
Richard and Judy Stess
Christopher and Waneska Torto
Annie and Jason Winship
Ted and April Wolcott Wright

Butterfield \$500 - \$1,999

Edwin Aherns
George and Hilary Alboff
Chris and Patricia Alioto
John and Meagan Anderson
Wendy Arthurs
Autodesk Foundation
James and Karin Stead Baigrie
Tim Baumsteiger
David Beach and Carolyn Ingram
Joanne Bertozzi
Amy and William Blackburn
Lezley Blair Hoffman
Gabriel Block
Ashely Bock
Mark Boero
Richard Bollini
Edward Bossange
Jim Boswell
Beverly Brewster
Eric and Holly Briesse
Pim Brouwer and Judy Ford
Dawn Brown
Bruce Campbell
Edgar and Saba Celis
Suzanne and Jock Christie
Benedetto Cico
David Clevenger
Peter and Nancy Cornwell
Tom Creedon
Phil Crumley
Lynn Davison
George Di Ruscio
Kristen Dickinson
Jason and Joelle Dodge
Dieter and Petra Dorstel
Alastair Dorward
Scott and Myra Drotman

SLEEPY HOLLOW CHARITABLE FOUNDATION DONOR HONOR ROLL 2013 – JULY 1, 2022

Christopher Dutton
Christine and Bill Elliot
John Feiner
Tom Fernwood
Christian Franklin
Jon and Dodi Friedenberg
David and Suzanne Friend
Andrew Gaebe
Sylvia Gardin
Edward and Judith Gatti
Chris and Sandy Gerner
Bob and Cathy Glass
Frank and Patsy Whatley Godino
Cynthia Goefft
Ron Goldstein
Brian Gough
Ron and Victoria Granucci
Jon and Stacey Grier
Steve Hale
Clara Hansbery
Dr. Brian Hennessy
Bruce and Susan Herman
Andy and Christine Hinkelman
Brian and Charlene Hollander
Andrew and Dana Horton
Scott and Carolyn Horton
Eugene Jacks
Peter and Ginny Jozwik
Tim Katter
Joshua Kelly
Perry Kerson
Rob and Andee Abramson Kerson
Glen Keyes
Chris and Marie Kimball
Hilary Kinney and Brook Hanson
Steve and Marlene Knox
Nora and Chuck Koslosky
Hugo Kosteini
Ronald and Patty Kuehn
Andy and Sara Kurtzig
Russell La Belle
Mason and Kimme Lee
Mitch Levin
Brian Lewis
Craig and Melissa Lewis
Jennifer Lucas
Jesper and Ronda Lundbaek
Bill Malet
Jason Malinowski
George Mancini
Gerard and Tammy Manley
Wallace and Eva Mann
Mark Mano
Steve and Gwen May
Sheri McConnell
Tom and Ginny McGraw
Val McKeever
John Meier
Dale Missimer
Peter and Nicole Mollison
Karen Moore

Rod Moore and Janet Fong
Matthew Morton
Tim and Roselle Buyco Nardell
Michio and Cecile Nekota
Dave and Lelah Nichol
Dr. Aldo Nicolai
Dr. Jang Oh
Merle Ongaro
Eileen Ormiston and Neil Burnett
Peter Pannes
Dave and Tammy Parr
Henry Pilger
Ernest and Rita Plattner
Matt and Kelly Podboy
Wick Polite
Bob and Amy Potter
Whitney and Ann Rabb
Thad and Leigh Reichley
Robert and Jacqueline Apeceix
Renfield
Katie Rice
Don and Annette Ruud
Walter Schneider
Jack Sherman
Dale and Audrey Shileikis
Michael and Rosemary Shorrock
Rich and Diana Shortall
Gail Sieber
John and Christina Simmons
Mike and Ellin Simmons
Matt and Gina Singleton
Sean and Lisa Solway
Chris and Jamie Staskus
Dan and Caroline Stein
Sebastian Stephen and Betsy Jones
Jessica and Nick Stielau
Kathleen Sullivan
Ross and Rebecca Sullivan
Patricia Swenson
Mary and Margit Tagliaferri
David and Kira Swaim
Barry Ulrich and Karen Mitchell
Ken Van Arnum
John and Katie Van Der Wal
Don and Tunj Wachelka
Firas Wadia and Shanti Putnam
Abigail and Eric Wald
Anne Welch
Greta Wells
Brian and Michelle White
Chris and Shelley Wilson
Robert and Eileen Wilson
Patrick and Valerie Wingfield
Jolene Winslow
Daniel and Sarah Wolf

Oak up to \$499

Rob Anderson and Dawn Aotani
Gregory and Heather Basso
Jim and Cathy Bedilion
Peter and Marie Behr

Louise Bochkay
James Burnet
Constantine Camamis
John and Tina Cheplick
Chris and Jill Lowry Cincebeaux
Dan and Cathy Clark
Patrick Corr and Patricia Merrell
Ryan and Gina Davis
David and Paulette Duysen
Meghan Faulkner and Surr Less
Phil and Carol Ferris
Peter and Susan Gallagher
Kim and Matthew Garrison
Phil and Jan Gazzano
Don and Virginia Humphreys
Megan Jones
Charles and Liz Leone
Jutta Leudemann
David and Virginia Lunyak Linton
Thad and Gina Logan
Kim and Peggie Marks
Lizanne McNamara
Andrew Megenthaler
Indru and Sally Michchandani
Elliot and Heidi Morshead
Sylvie Mountanos
Nick and Nancy Paun
Michael and Andrea Pearce
David and Sarah Perkinson
Priscilla Pittiglio
Time Pult
Newlin and Ellen Rankin
Ingrid Siefert
Michael and Helga Slessarev
Bryan and Theresa Talany
Matthew Taylor
David Thompson
Patty Vance
Wagner Children
Nancy Walters and David Kell
David Wilson
Paula and Jim Wooster

Events Combined \$60,000+

Raise the Roof
Rock the Clubhouse
Horseman's Ball
Splash
Ping Pong
Lap-a-thon
Last Dance
Cornhole Tournament
An Evening with StoneFish
Cocktail Cabal

Managing the Community Center



SHHA is happy to announce that effective August 15, Aya Andrews will become the Community Center Manager. We will also engage a Site Superintendent, both part time positions and initially on a contract basis to be sure that our revenues will continue to support the expense. We have Site Superintendent candidates, and also welcome your suggestions.

We believe members and the community deserve to know that the asset we have created together will be maintained and preserved for future generations, and that the level and range of activities meets expectations and is in keeping with the value of our space. We will always depend on volunteers to initiate and carry out activities, and on all users to respect and take care of the Community Center.

We also know that ongoing, consistent, professional leadership and support are necessary. From the earliest operating projections there has been a budget for managing the site and activities, but it has never made it into the annual operating budgets. Now, thanks to significant increase in memberships, including the pool, we are able to take on this expense. And we need to do so for the same reason: significant membership and facilities use.

Responsibilities of the Activities and Rentals Manager include volunteer coordination, booking and scheduling activities for a wide range of ages and interests throughout the year, and handling the rental of our space for private events. We do not plan to increase private rentals, but every rental must be managed to preserve our asset and be considerate of neighbors.

We thank Aya, on whom we have relied heavily for much of the Activities management. Activities have grown significantly under her leadership, and it's past time to establish a structure and financial support for the key role. Aya will resign from the SHHA Board and plans to work at the Community Center weekdays on a regular schedule, about 20 hours weekly.

Prior to moving to Sleepy Hollow in 2017 with her husband Matt and two young daughters, Aya's corporate career included retail, finance, and operations positions with Apple, Sephora, and Gap Inc. In her free time, 5:30 a.m. -7:00 a.m., she taught group fitness classes at local gyms. After moving here, she took a break from Corporate America to be more present with her girls, Aubrey and Kaya, who are now 10 and 8. She became a community contributor including serving on the board of SHHA. She started a small group fitness business, Marin.FIT, and has become more and more involved in volunteer opportunities at school, sports, and through the Sleepy Hollow Community Center. She is excited to continue to dedicate her time and passion towards making this community the best it can be!

Site Superintendent responsibilities include management of service contracts, waste and recycling management, identification of repairs/replacements needed, handling or supervising suitable tradesmen and licensed skilled workers. Contact ginasingleton@gilead.com if you are interested in part time work in the community or if you can volunteer to take some of the responsibilities to spread our dollars.

We thank our neighbor Eric MacAusland who has handled the Site Manager responsibilities and more with dedication, getting us from construction to some normalcy of operations. He will volunteer with others sometimes, and will train the new Site Superintendent. Enjoy your Community Center and help us take care of the investment.

8



Chelsea Hill teaching her HipHop dance group.

Chelsea Hill Brings HipHop Culture to Sleepy Hollow

This past week Chelsea Hill inducted a new group of youth into the HipHop culture of the Bay Area! These students spent all week learning more about the history, pillars, and community aspect of HipHop as a culture, not just a dance form. In only five days they memorized a full HipHop dance and performed for their family. Additionally, students worked collaboratively, in small groups, creating dances that were their own. They used a combination of iconic dance moves taught, with imagination, self expression, and interpretation to create laughter, style, and problem solve. Chelsea was so proud of these new students, and hope they carry on with the importance of respect, self-knowledge, and community at the forefront of their journey in dance, and life.

Home Evaluations

The Sleepy Hollow Fire Protection District (SHFPD)

All homes in Sleepy Hollow received a wildfire safety evaluation from the Marin County Fire Department. These evaluations included required actions based on the fire code and recommended actions to help protect your home from the embers which are the primary source of home ignitions. Approximately one month later, a follow up evaluation was done to determine if required actions had been taken. To the credit of Sleepy Hollow residents, a high percentage of you took the requirements seriously and a great deal of wildfire mitigation work has now been completed.

Direct Assistance The Sleepy Hollow Fire Protection District (SHFPD) created a direct assistance program to help residents in need of major vegetation removal work. The SHFPD hires a crew of landscape professionals to remove hazardous fuels such as Italian cypress, juniper and bamboo. This program is on a first come first served basis until funding runs out, so if you have not yet applied or have any questions, here is a link to the program <https://www.shfpd.orgun/shfpd-direct-assistant-pilot-project>

Chipper Days There will be two more opportunities for curbside pickup during the weeks of August 29 and September 26. Sign up at <https://www.chipperday.com>. The final chipper event of the year will be

Zamira is #1 for Sleepy Hollow Homes Sales 2015 - 2021!



REPRESENTED BUYER
10 Deer Hollow Road



REPRESENTED SELLER
50 Tarry Road

"I cannot possibly say enough excellent things about working with Zamira and her team. She is thoughtful, thorough, super conscientious, and a tigress of a negotiator. She held my hand along the way, offered wise assurance when I needed it, and in the end, she got us a fantastic price for the property."
K. TYNER

Call Zamira today to get results that move you!



Zamira Solari
REALTOR ©
Results That Move You
415.509.1479
zamira.solari@compass.com
ZamiraKnowsMarin.com
DRE 01328544

COMPASS

NEWS FROM SAN DOMENICO

CAMPUS STATUS

Thank you for your collaboration in best protecting our communal health during this historic pandemic. With the latest COVID numbers in the County of Marin and current and expected Public Health directives, the perimeter trails and paths around campus are open for community use. When school is in session, and because we are a boarding school with kids and resident faculty on campus 24/7 from late August through early June, we we ask that you kindly refrain from entering the instructional zones in the middle of campus during these times.

We appreciate your understanding and cooperation.

Questions? Send a note to us at contactus@sandomenico.org . Stay healthy and well!

Renew or join SHHA to receive all issues mailed to your home.

2022 Editions:

May-June, mailed to all residents

July-August, mailed only to SHHA members

September-October, mailed only to SHHA members

November-December, mailed to all residents

We are relying more and more on email announcements and the detailed calendar of activities at www.shha.org/Events.

held on October 1. This is a drop off at the end of Butterfield Road to coincide with the annual creek cleanup.

Grazing Most of you will have seen the goats grazing on Sleepy Hollow hillsides. In some areas the grazing was expanded to support the Greater Ross Valley Shaded Fuel Break Project <https://www.marinwildfire.org/project/shaded-fuel-break-planning-project>. The goats are almost finished in Sleepy Hollow and will be moving on to Fairfax and San Anselmo.

Evacuation Drill By the time this newsletter is published, Sleepy Hollow will have held its evacuation drill. We will report on participation in the next newsletter, but as a reminder the purpose of these drills is to get residents to think through the actions they would need to take if we had to evacuate. This is an opportunity to review and update your family preparedness plan, check your go bag, and review your evacuation strategy. Sign up for Alert Marin, be ready to leave your home within 15 minutes of receiving an order to evacuate, get down to the valley floor (Butterfield Road), stay in your car, and follow directions from public safety personnel. Be especially alert on Red Flag days.



SAN DOMENICO SCHOOL
K-12 Independent, Day and Boarding

Contact admissions for a tour today!

 415.258.1905 sandomenico.org

COMING SOON! ANNUAL CREEK CLEANING DAY!

Start October with a bang by getting outside and cleaning your section of the creek and any waterways on your property...be the best neighbor and community member you can be!

Annual Creek Cleaning & Chipper Day – October 1

Even as all of us have been impacted by the current drought, it's time to start preparing for winter rains! Let's all plan to clean up our sections of the creek, drainage areas and anything that could cause localized flooding (e.g., yard waste, broken branches, leaves). If you see something that may need extra attention or if you're willing to help clean "needy" sections of the creek, please reach out to Eric Riemer at 415-748-4231 or eric_riemer@comcast.net.

Sleepy Hollow Fire Protection District (www.shfpd.org) will also have a chipper station located at the end of Butterfield (by the entrance to San Domenico) on the day of the creek cleaning from 9:00 a.m. to 3:00 p.m. Bring your excess branches and we will chip it for you! If you need help hauling your debris, please drop by the chipper station before noon (earlier if possible) and we will do our best to help coordinate pick-up and transportation. For any questions about the chipping service, either on or before the 1st, please contact Rich Shortall at rshortall@shfpd.org.

SHHA Creek Committee

Top right: Chipper days for creek clean up

Right: Community preps to clean creek



Sleepy Hollow Presbyterian Church

Home of the Justice Garden and the Farm Stand - We Grow Organic Veggies to Feed the Hungry.

All are welcome Sundays at 9:30 a.m. for music, inspiration, and friendship in our renovated indoor-outdoor sanctuary, or you can watch our live stream on zoom.

- **Farm Stand Season** means delicious organic heirloom tomatoes and more, Saturday mornings on Butterfield at Green Valley. All donations benefit hunger programs.

- * **Sing with Alex Walker and Pam Selvig** Wednesdays at 6 p.m. and Sundays at 11 a.m. Teens welcome.

- **Children's Program:** stories, art, and games teaching Respect, Kindness, Sharing, and Planet Care.

- **Youth Group Conversations** on Sunday morning, service opportunities, and Game Night Friday August 19, 6 p.m. with Youth Director Ryan, a thought partner for teens.

Contact Pastor Bev if you would like to get to know more about the church, or for a zoom invite: beverlybrewster@comcast.net
Music Lessons and Laughs with Director of Music Alex Walker: Guitar, piano, drums, saxophone, voice.
Sunday afternoons at the church: alexwalker.walker@gmail.com

The Rev. Bev Brewster, Pastor, 415-453-8221, 415-446-8267 cell • shpchurch@comcast.net 100 Tarry Road, San Anselmo, CA 94960. www.sleepyhollowchurch.org



Left: Pastor Bev with Chase and family



Right: Family Fun Night at Peri Park

OFFICE ASSISTANT NEEDED

Job Description: Tamalpais Tutoring is currently seeking an office assistant to answer phone calls, match students with tutors, and perform common office tasks such as filing. This part-time job is 5 to 10 hours per week, but could increase depending upon the successful candidate's skill set and the needs of our growing business. The office assistant can set his/her own schedule and meets with the director once a week to plan for the week ahead. Most tasks can be completed from home, although some work will need to be done at our Kentfield office. Transportation is helpful but not required.

This is the perfect job for someone who likes flexible hours, wants to work primarily from home, and is looking for extra income.

Qualifications: The successful candidate is flexible, calm, and able to empathize with concerned parents. Good working knowledge of word processing and spreadsheets is required. Previous experience working in an office environment is a plus. Some HR experience is a plus. Fluency in English is also essential.

Compensation: Pay ranges from \$20 to \$28 per hour, commensurate with experience.

Apply: Send cover letter and resume to the email address provided. Visit TamalpaisTutoring.com for more information about us. office@tamalpaistutoring.com

Please note: Because our company works with minors, Tamalpais Tutoring conducts background checks before hiring. Tamalpais Tutoring is an equal opportunity employer (EOE).

DO YOU HAVE A SENIOR DOG?

I am a veterinarian that specializes in acupuncture for dogs. I do house calls in the Sleepy Hollow neighborhood. Send me an email at LisaBaneDVM@gmail.com or call Dr. Lisa Bane at 415-448-6040. <https://lisabanedvm.wixsite.com/acupuncture>

SLEEPY HOLLOW HOME FOR RENT

4 Bed/3 Bath home for rent with pool Available mid-June to August 2022 \$8,000/month For more info please call or text 415-250-8024

FRIENDLY MAC HELP

I'll help you get your Mac, iPad, and iPhone to play well together. 24 years solving Sleepy Hollow's Mac Problems

Help with Mac, iPhone and iPad

- Mac OS installs & Upgrades
- Mac repairs
- Installs of Ram, Hard drives and backup systems
- Printers and wi-fi Setup
- New Mac shopping (I will guide you to the right Mac for you, and help you find the best price on it, I have great resources for new and used Macs.
- I can move data from old Mac to your new Mac or iPad or iPhone.
- Show you the best way to use iPhotos and Photos app
- I can show you how to get the best out of your iPhone and iPad

Favorite of Families & Seniors Call 7 days/week. 10 am-8 pm After-dinner house calls available. **Mac Attack? Call Zack!** 415-721-2127.

PLAN YOUR MOVE NOW!

We have the lowest inventory of homes right now, which means more buyers for your home and more money for your home.

Call for your complimentary home consultation. **Darlene Hanley**, "Your Sleepy Hollow Specialist for over 30 years". Coldwell Banker Realty, Global Luxury Specialist Darlene.Hanley@cbnrcal.com (415) 717-7531 CalRE #00945576

EASIEST WAY TO SAVE MONEY!

Growing up in Sleepy Hollow and swimming on the Sea Lions for 13 years, I'm excited to be back working in my hometown. The past year I've gained a ton of knowledge assisting mortgage loan officers at Searchlight Lending while eventually earning my license. Headquartered in San Rafael, I'm eager to help friends and families in my hometown save money. Whether you want to lower your rate, pull cash out, or purchase a home, I'm one call away to discuss your options and make the process as clear and efficient as possible. Let's make monthly payments way less stressful! **Marcus Anderson** 415-686-2790 or marcus@

searchlightlending.com
MLO CA #2011741
DRE#02130672

WEST COAST MORTGAGE CO, INC.

Competitive program and rates. Outstanding service and quick processing. Call me for all your real estate financing needs – refinance or purchase. **Brad Schauer** 415-459-2458 or brad@westcoastmortgageco.com CA DRE REB #00599802 NMLS #359765. Many Ross Valley references.

GIRL FRIDAY/ HANDYWOMAN

Need help working through your to-do list? **Girl Friday Louise Berto** can organize your papers and files, help clear out your office, closets and/or garage, fix torn screens, sort, sell or ship your stuff, troubleshoot your computer/internet/cable system (and teach you how to use your smart phone/tablet), and program your garage and TV remotes. Licensed and bonded; local references. Energetic, empathetic help for troublesome tasks. Call Louise at 415-810-4704 (cell) or 415-460-1346 (evenings).

SMART, RELIABLE HANDYMAN

Les Ditson specializes in repair, restoration, and/or installation for people who want solutions more than remedies. A Sleepy Hollow resident himself, he has dozens of local clients and outstanding references. *"My house works because of Les' work, and I have come to rely on his intelligence, honesty, problem-solving ability, and expertise as a craftsman. His results are beautiful, nothing slipshod or flimsy, and he has saved me money on more than one occasion, making suggestions that are cheaper, simpler, and ultimately better looking than what I had envisioned. He is a gem."* M.M., Fairfax. **Les Ditson** 415-497-0523

NARODNYTEAM SLEEPY HOLLOW REAL ESTATE:

The Narodny Team, longtime residents of Sleepy Hollow with specialized knowledge of the area. Call for advice, a detailed evaluation of your property, or discuss current market expectations. Donations made to the school of your choice in the area when we close! 415-265-7488 DRE#00550056

WINDOWS, MAC, WIFI - SETUP, REPAIR, TUTORING

Dennis Crumley, Sleepy Hollow native with 20+ years of experience in Apple & Microsoft software (as well as routers and printers) will help you:

- Repair unresponsive computers or programs
- Speed up computers slowed by bloatware
- Fix wifi dead spots and poor Internet speed
- Move your files to a new computer
- Remove malware & viruses
- Set up protective backups
- Solve problems caused by "updates"
- Advise on purchasing new devices
- Fix or connect printers and scanners
- Sync your mail, contacts & photos across tablets, phones & computers
- Answer all "How To" questions & teach new procedures

I'm especially good with older folks who need patient instruction! And my rate's very fair – only \$55/ hour! Contact **Dennis Crumley** at 415-706-7396 or befixed@gmail.com

DOG WALKER/ HOUSE SITTER

Are you going out of town for the weekend or too busy to walk your dog? I would be happy to help you and care for your pets. I'm a Sleepy Hollow resident. Feel free to call at 415-720-1331. Emma

HOME GARDENING DOG WALKING

14-year old entering Freshman at Archie William High School. I have been active in several local and traveling boys' basketball leagues, and am a strong swimmer. I would love to help my neighbors with dog walking, brushing your pool as well as home gardening. Experience at four homes doing these activities. Steve at 415-328-0411.



SLEEPY HOLLOW

HOMES ASSOCIATION

1317 BUTTERFIELD ROAD

SAN ANSELMO, CA 94960

PRSR STD
U.S. POSTAGE PAID
SAN RAFAEL, CA
PERMIT #163



July/August 2022 Print issue • Info about the Sleepy Hollow Homes Association at www.shha.org

OPPORTUNITY KNOCKS



22 Dutch Valley Lane, Sleepy Hollow

Price \$1,895,000

Set on approximately .404 acres w/ views of the Loma Alta Hills and open space is this 2600+ sq. ft., custom built home. The house is original and owned by the original owner.

- 4 Bedrooms/3 Baths
- Living Room with Fireplace | Formal Dining Room
- Sunny, level yard with pool, lawn and deck



Darlene Hanley

Global Luxury Property Specialist

415.717.7531

Darlene.Hanley@cbnorcal.com

darhanley.cbintouch.com | CalRE #00945576



**COLDWELL
BANKER
REALTY**

Join SHHA Now

SHHA membership offers broad benefits to your family and the community as a whole through March 31, 2023. Join on line at shha.org or mail your check to SHHA, 1317 Butterfield Road. Enjoy discounted event and activity prices including fitness classes and children's events, bulletins mailed to your homes, opportunity to attend SHHA Board meetings. You will be supporting street safety on Butterfield including safe routes to school, including crosswalk and bike lane improvements, advocacy for speed installing the cell tower recently approved for the San Domenico site, and more. At \$340 (\$300 seniors 65+) for families, its still a good deal. Choose auto renewal to enjoy 2023 membership and save \$10 on your annual fee.

Be sure we have your email and watch for announcements there and in this bulletin about weekly activities and events upcoming in August and September. Send questions to shhawebsite@gmail.com.

*Hayley Mullen, Membership
and Pete Mayer, President*